



Essex County Council



10 Year Plan

Meeting the demand for mainstream school places in Essex

2024-2033

January 2024

Contents

1. Executive Summary	2
1.1 Areas of growth and additional places planned	2
1.2 Purpose and scope	3
1.3 School Organisation, Funding & Delivery	3
1.4 Net-Zero Schools	4
2. Introduction – Planning for school places	5
2.1 Statutory duty and available funding	5
2.2 Forecasting methodology	5
2.3 Sustainable Schools Strategy	6
2.4 Academies and Free Schools	6
2.5 Factors that influence planning for school places	7
2.6 New Housing, S106 and Community Infrastructure Levy	7
3. Forecasts and Plans	10
3.1 Mid Essex	11
3.1.1 Braintree	12
3.1.2 Chelmsford	18
3.1.3 Maldon	24
3.2 North East Essex	28
3.2.1 Colchester	29
3.2.2 Tendring	35
3.3 South Essex	41
3.3.1 Basildon	42
3.3.2 Brentwood	47
3.3.3 Castle Point	50
3.3.4 Rochford	52
3.4 West Essex	55
3.4.1 Epping Forest	56
3.4.2 Harlow	60
3.4.3 Uttlesford	63
4. Past Expansions and New Schools in Essex	69

1. Executive Summary

1.1 Areas of growth and additional places planned

In Essex (Essex County Council or ECC) as of May 2023 there were 447 primary, infant and junior schools; 78 secondary schools; 2 all-through schools and 1 University Technical College. The total capacity in May 2023 was 130,177 primary places and 105,412 secondary places. In May 2023 there were 120,035 primary pupils and 94,191 secondary pupils (including sixth form) on roll at ECC schools. This was an increase of 1,143 primary and 1,325 secondary pupils since May 2022.

The increase in demand for school places in Essex is predicted to continue. The forecasts used in this Plan suggest that the total number on roll by 2033/34 will be 121,290 primary pupils and 95,410 secondary school pupils (including sixth form).

The need for new places will be different from what the Essex-wide figures above suggest as the available capacity does not always align to areas of growth or the required year groups. As well as this, the National Audit Office report 'Capital Funding for New School Places' (2013) refers to a minimum 5% surplus that the Department for Education (DfE) assumes in its planning as necessary to support operational flexibility.

For school management reasons the number of pupils that can be admitted each September varies, and overall capacity cannot simply be divided by the number of year groups to calculate the number of pupils that can be admitted each year. When planning school places it is prudent to focus on the Published Admission Number of schools in each area and the number of pupils in each corresponding admission year.

Based on the number of projects anticipated ECC will need to deliver an additional 5,270 primary school places and 810 secondary school places over the course of the 10 Year Plan. This does not include some of the new schools that will be required and are being planned to support new garden communities when they are built. As plans for these new communities progress future iterations of this plan will include forecast demand for school places arising from them, and more new schools to meet that demand.

1.2 Purpose and scope

The purpose of the 10 Year Plan is to set out:

- The demand for mainstream school places in the next 10 years (from academic year 2024/25 to academic year 2033/34) for each of the pupil place planning areas
- Solutions already in the pipeline that will meet the forecast demand for school places
- Potential options to address medium to long term forecast demand for school places
- The context in which the Essex School Organisation Service operates to ensure there are sufficient school places

The Plan is updated annually to consider new forecasts, the capital budget setting cycle, and potential options and solutions that have been identified since the previous version. This 10 Year Plan is based on forecasts produced during the 2022/23 academic year as part of the DfE's annual School Capacity data (SCAP) return.

The scope of the 10 Year Plan is mainstream statutory age education provision in Essex. Special Educational Needs and Disability (SEND), early years, sixth form and other forms of education provision are not within the scope of this plan but are considered when deciding solutions to ensure efficient and sustainable choices are made for capital investment.

1.3 School Organisation, Funding & Delivery

School Organisation

For the purposes of planning school places ECC organises schools by quadrants, districts and planning groups. The quadrants and their districts are listed in the following table:

Mid Braintree, Chelmsford, Maldon	North East Colchester, Tendring
South Basildon, Brentwood, Castle Point, Rochford	West Epping Forest, Harlow, Uttlesford

Planning groups are groups of schools, defined by geography and admission patterns, wherein a sufficiency of places across the group will generally ensure every child can access a local school place even if some schools are oversubscribed. Planning groups provide the basis for the annual School capacity survey return (SCAP), which determines the level of 'Basic Need' funding ECC is allocated. Some of the groups have changed since the 2023-2032 Ten Year Plan. Some groups are not strictly by geographical district and their schools may be found under a nearby district. The planning group forecasts are set out in detail in Section 3 of this document.

The Essex School Organisation Service comprises a team of 10 officers who lead and manage the school organisation and pupil place planning activity of the local authority. Officers from the team have assigned quadrants and liaise with schools individually and collectively to discuss current numbers on roll, future demand for places and any projects that need to be completed to ensure sufficient capacity. Officers from the team also engage with planning authorities, local members, residents, communities, faith groups, developers and all tiers of government. In this way they develop the 10 Year Plan collaboratively with schools and other stakeholders.

Funding & Delivery

ECC uses a mixture of funding sources to finance additional school places. Funding sources available include Basic Need grant from central government, Section 106 / Community Infrastructure Levy contributions from developers, Free School funding from the Education and Skills Funding Agency (ESFA) and contributions from schools. New school places must be funded through these means as ECC has no other grants or funds dedicated to providing school places.

The Capital Programme, which includes the planned spending on education infrastructure, is published annually at www.essex.gov.uk. ECC has a professional in-house Infrastructure Delivery Team. The team assists the development of school expansions and new schools by undertaking viability studies and then leading on the delivery of the capital projects to completion. Through the work of this team school building projects are delivered to a high standard and at good value, ensuring the best outcome from the investment of public funds.

1.4 Net-Zero Schools

Since the start of 2020 ECC has commissioned all school expansion projects to include renewable energy as a contribution towards combatting climate change. 2021 saw completion of Essex's first new school buildings designed for net-zero carbon in operation. This work complements a programme of energy-efficiency upgrades and other works being planned for existing school buildings to further reduce Essex's carbon footprint. Since 2023 all new school buildings for basic need expansions, including new schools, have been designed to be net-zero carbon in operation.

2. Introduction – Planning for school places

2.1 Statutory duty and available funding

ECC has a statutory duty to ensure sufficient school places for children aged between 4 and 16 years old. Fulfilling this duty, and aligning strategic planning for school places with other service requirements, supports the strategic aims of Everyone's Essex 2021-2025, ECC's plan for levelling up the county:

- Strong, inclusive, sustainable economy
- High quality environment
- Health, wellbeing and independence for all ages
- A good place for children and families to grow

To discharge this responsibility school organisation changes are commissioned in response to forecast data that predicts the demand for school places. These school organisation changes include building new schools, expanding existing schools, closing schools, or reducing the intake at schools.

As stated in section 1.3, there are a number of funding sources for delivering school building projects, all of which need to be coordinated through the Council's Capital Programme. A long-term plan for ensuring sufficient school places is required to enable capital (and revenue) financing to be secured and spent effectively.

Endorsement for the Plan is sought from the ECC's investment boards upon each revision to enable a dynamic response to changes in demand for school places, thereby ensuring that every child in Essex has an appropriate place to go to school.

2.2 Forecasting methodology

School forecasts are prepared for each area using the number on roll in the January Census, the number of places offered for September, historical trends in admissions, and GP registrations in October the previous year (the number of children registered with a GP's surgery based on NHS data). For year groups beyond reliable GP registration data an average of the last three potential cohort sizes is calculated and Office for National Statistics birth rate trends are applied to estimate long term need. For schools with sixth forms historical staying on rates are calculated and applied to the relevant cohorts.

The number of additional pupils likely to be generated by new housing is added to the forecasts. . These figures are based on housing trajectories supplied by planning authorities (the district councils), amended with subsequent planning approvals and information from housing developers

and planning authorities. External factors such as interest rates could affect housing delivery and therefore pupil demand.

The likely demand for additional places at local schools created by new housing is calculated using different factors for houses and flats. One-bedroom units and certain other types of dwellings, such as student accommodation and housing for the elderly, that are unlikely to house children are discounted from the calculation. The factors used for primary pupils are 0.3 additional school pupils per new house and 0.15 additional pupils per new flat. For secondary pupils the factors are 0.2 additional pupils per new house and 0.1 additional pupils per new flat. The gradual build-up of pupils from new housing is modelled using additional factors to stagger the pupil product, rather than the full pupil product being added in the first year that new homes are occupied.

2.3 Sustainable Schools Strategy

The aim of the Sustainable Schools Strategy is to encourage schools which are strong and viable both educationally and financially, and which provide our children with a high-quality education.

The Sustainable Schools Strategy group explores the issues facing schools, including forecast pupil numbers, budget pressures, recruitment and retention, school standards (currently most Essex schools are rated good or outstanding by OFSTED), importance to communities, and potential income opportunities. Key indicators are used to provide a framework to consider issues of school sustainability. The intention is to aid all those involved with schools, helping to assess where early intervention is required.

The group also makes recommendations to the Director of Education to ensure that, where possible, schools can take proactive decisions to secure a sustainable future and provide a high-quality education.

2.4 Academies and Free Schools

There are more than 300 academies in Essex. ECC has a robust procedure in place to support the academy conversion process, which is primarily a legal function.

Free Schools were initially a method for groups of parents or other parties to set up a school that would provide diversity in the school system, often in response to low standards in the local area. Over recent years the Free Schools programme has changed. Not only are all new schools proposed by local authorities considered Free Schools (this has no practical impact on opening new schools), but Free Schools are now being proposed by multi-academy trusts and other groups, in response to forecast demand.

The Free Schools Programme provides an opportunity for ECC to build on a strong collaborative working relationship with the Regional Director and multi-academy trusts in Essex. This will enable

ECC to continue to ensure sufficient school places even if / when no schools are under its direct control.

2.5 Factors that influence planning for school places

There are a number of factors that influence strategic thinking and solutions outlined in this 10 Year Plan. These are kept under regular review and include:

- Fluctuation in forecast pupil numbers
- Planning authority Local Development Plans (many of which are still 'emerging')
- Phasing and timing of housing developments and the availability of sites for new school provision (services, access, infrastructure)
- Changing patterns of growth in mid-year migration
- Schools and Academies adjusting their Published Admission Numbers or capacities
- Cross-border migration patterns and delivery solutions
- Changes to admissions arrangements
- Project viability
- Home to school transport

The Home to School Transport Budget comprises a grant (which is not 'ring-fenced') and a contribution from the Dedicated Schools Grant. This budget is under constant pressure. When considering the strategic need for additional school places in an area, the transport implications are key to determining the locations of solutions, and thereby the cost / benefit of those solutions. Where solutions do not address need locally, and transport must be provided, ECC is obliged to meet the cost of the transport in perpetuity.

2.6 New Housing, Section 106, and Community Infrastructure Levy

The 12 borough / district / city councils in Essex that act as local planning authorities are required to draw up Local Plans. Under the terms of the National Planning Policy Framework (NPPF) these Local Plans must seek to accommodate their objectively assessed housing need, or that derived through the 'Standard Method', through specific deliverable sites in the first five years of the Plan period. In addition, they are required to identify other developable sites for new housing for years 6-10 of the Plan period, to ensure an ongoing five-year supply of housing sites. ECC comments on the likely impact on school places of new housing allocations to help local planning authorities understand how sustainable their plans are for school place planning and, importantly, where they need to allocate land for new school place provision.

To meet the need for new housing a number of Local Planning Authorities have allocated and / or granted permission for Garden Communities:

- Chelmsford Garden Community (around 10,000 homes)

- Harlow and Gilston Garden Town (around 16,500 homes, of which 10,000 are in East Herts)
- Tendring Colchester Borders (around 7,500 homes)
- Dunton Hills Garden Village (around 3,700 homes)

These will be significant new settlements that aim to be self-sustaining in terms of infrastructure. The precise scale of plans and timescales are still emerging so in some cases our forecasts have yet to include this growth. New schools will need to be planned and future versions of this document will consider the needs of these Garden Communities. Our general approach is outlined in the document 'Garden Communities and Planning School Places' which can be downloaded from our web site (www.essex.gov.uk).

A number of the local planning authorities do not have an up to date adopted Local Plan. This has resulted in housing developers submitting speculative planning applications for sites that may not be sustainable for school place provision. In the absence of a five-year land supply the applicant has a strong chance of a successful appeal if the planning application is refused. This can result in housing developments being granted planning permission in areas where there are insufficient places or expansion options at local schools to accommodate extra children, and the development is of insufficient scale to deliver a new school. This can be particularly problematic in single school rural areas.

Because these housing developments are not known in advance they may allow insufficient time to identify, plan and build places to meet the increased need. This may mean school transport has to be funded. ECC seeks to limit this impact through proactive collaboration with the local planning authorities to aid them in development of their housing plans. The way the team seeks to engage in this is set out in our 'Local and Neighbourhood Planners' Guide to School Organisation' which can also be downloaded from our web site (www.essex.gov.uk).

When the number of pupils generated by new housing is greater than the surplus capacity in permanent accommodation at appropriate local schools a contribution can be sought from the developer via a Section 106 (s106) agreement. This contribution can be in the form of additional land and / or a financial contribution for new accommodation. Local planning authorities decide whether to support such requests and they have a duty to balance all the requests made by infrastructure providers against the viability of the development. Full details of how developer contributions are sought and calculated can be found in ECC's Developers' Guide to Infrastructure Contributions at www.essex.gov.uk.

The Community Infrastructure Levy (CIL) allows a local planning authority to introduce a fixed charge on development to fund infrastructure that is not being delivered through s106. Of the 12 district councils in Essex Brentwood Borough Council, Castle Point Borough Council and Chelmsford City Council have adopted a CIL. Other councils are considering CIL but it is not thought that all 12 will adopt a charge.

Phasing and timelines for potential new housing are closely monitored, and viability reports have been commissioned for the delivery of several new schools associated with developments. Plans are being progressed with developers to ensure that new provision can be delivered, at the earliest viable opportunity, where there is insufficient capacity within existing schools to accommodate pupils from the initial phases.

Delivery of new provision is dependent on confirmation of the housing build rate by the developer, planning permissions, and the timescale for completion of necessary infrastructure to serve the new school, including services and access. The quality of the environment around the school site is essential, as a new school cannot open in the middle of a building site with no safe walking and cycling routes.

3. Forecasts and plans

The following sections include the school place forecasts at a planning group level, grouped into districts and quadrants. For each district, the primary planning groups are shown first, followed by secondary planning groups. Below is an example:

1 **F. Southeast (Feering)** Current PAN: 130 2
Current Capacity: 895

Reception Place Forecast

3

Year	24/25	25/26	26/27	27/28	28/29	29/30	30/31	31/32	32/33	33/34
+/-	30	28	11	13	7	1	-4	-10	-13	-17

4 Feering CE Primary, Kelvedon St Mary's CE Primary, St Peter's CE Primary Coggeshall

5

Year	NOR
24/25	833
25/26	860
26/27	879
27/28	896
28/29	907

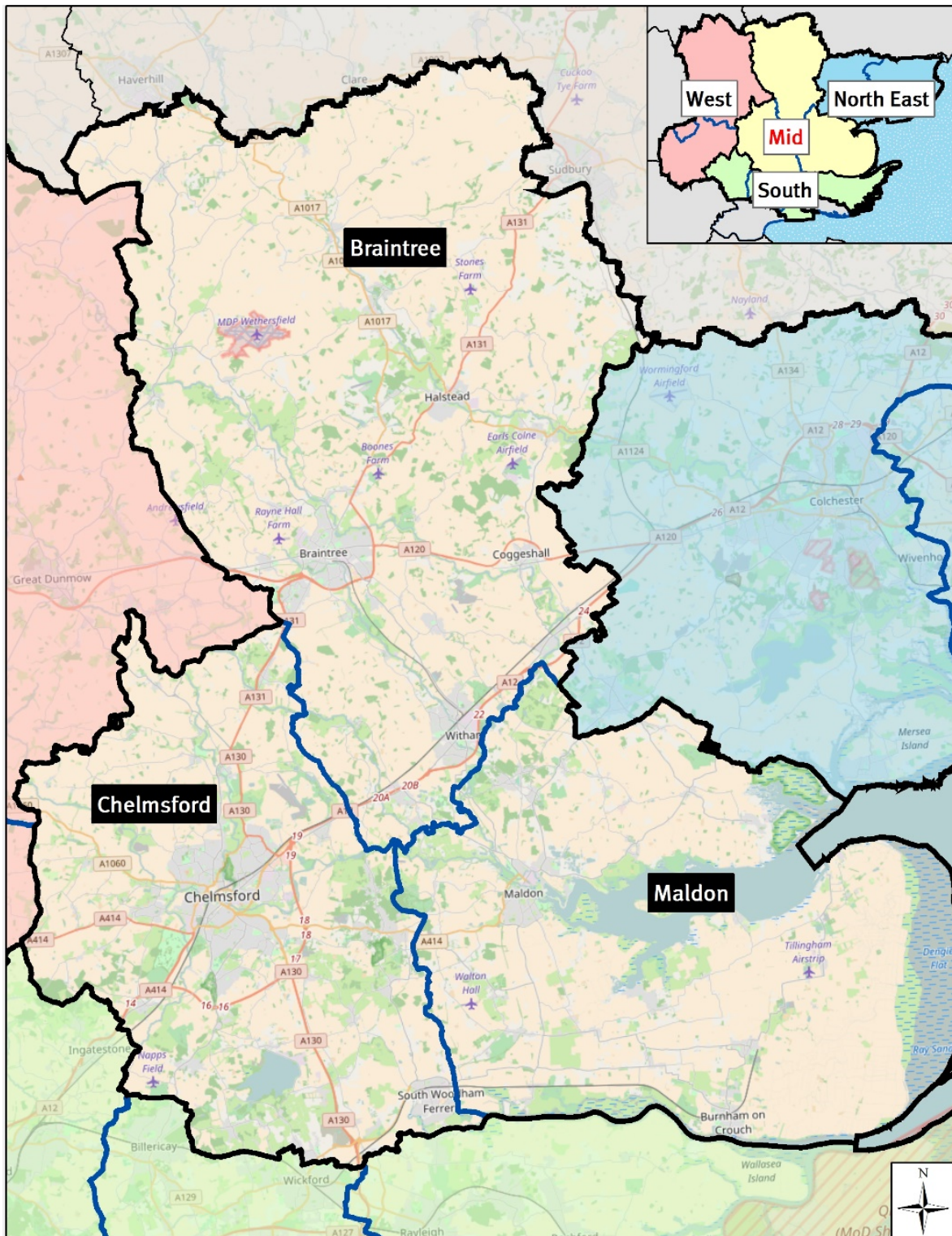
6

School	Year	Description	Places
St Peter's CE Primary	25/26	½ form entry expansion	15/105
Feering CE Primary	31/32	Small expansion	5/35

7

- Name** – Each planning group has a name, describing a general geographical area.
- Current PAN** - The Published Admission Number for September 2023 i.e. the number of places available at Reception or Year 7 (the first year of secondary education).
Current Capacity is the total physical capacity of the schools as of May 2023.
- Forecast** – This headline forecast will be for either Reception places (primary) or Year 7 places (secondary). It shows the surplus or deficit of places forecast for the next 10 years, against PAN.
- Schools** – A list of the schools included in the planning group.
- Number on Roll (NOR)** – This data shows the entire forecast school population. This can indicate where additional school places are required in response to high levels of new housing or inward migration, even when the headline forecast does not indicate a need.
- Projects Pipeline** – These are the projects the council is proposing, to mitigate any forecast need for additional school places. A school will be named where the project is agreed in principle, but subject to governance along with the year of implementation and a brief description of the project.
- Places** – In the example (15/105), 15 refers to the number of Reception places created (expected increase in PAN), and 105 refers to the total capacity created across all year groups.

3.1 Mid Essex



For the purposes of school organisation and place planning Mid Essex is Braintree and Maldon districts and Chelmsford City. All three councils have adopted Local Development Plans albeit Chelmsford and Maldon have commenced work on their next Plans.

3.1.1 Braintree

Primary School Planning Groups

A. North (Suffolk border)

Current PAN: 111

Current Capacity: 778

Reception Place Forecast

Year	24/25	25/26	26/27	27/28	28/29	29/30	30/31	31/32	32/33	33/34
+/-	44	33	31	36	36	36	36	36	36	36

Belchamp St Paul's CE Primary, Ridgewell CE Primary, St Andrew's CE Primary Bulmer, St Andrew's CE Primary Gt Yeldham, St Margaret's CE Primary Toppesfield, Steeple Bumpstead Primary

Number on Roll (NOR)

Year	NOR
24/25	592
25/26	589
26/27	593
27/28	572
28/29	557

Project Pipeline

School	Year	Description	Places
No expansion projects currently in pipeline			

B. West (Bardfield)

Current PAN: 59

Current Capacity: 435

Reception Place Forecast

Year	24/25	25/26	26/27	27/28	28/29	29/30	30/31	31/32	32/33	33/34
+/-	16	19	17	16	17	17	17	17	17	17

Finchingfield St John the Baptist CE Primary, Gt Bardfield Primary, Shalford Primary, Wethersfield CE Primary

Number on Roll (NOR)

Year	NOR
24/25	301
25/26	308
26/27	301
27/28	298
28/29	296

Project Pipeline

School	Year	Description	Places
No expansion projects currently in pipeline			

C. Mid-North (Hedingham & Maplestead)

Current PAN: 75

Current Capacity: 530

Reception Place Forecast

Year	24/25	25/26	26/27	27/28	28/29	29/30	30/31	31/32	32/33	33/34
+/-	17	2	15	10	10	10	10	10	10	11
de Vere Primary, St Giles' CE Primary Gt Maplestead, St Peter's CE Primary Sible Hedingham										

Number on Roll (NOR)

Year	NOR
24/25	494
25/26	511
26/27	501
27/28	491
28/29	475

Project Pipeline

School	Year	Description	Places
No expansion projects currently in pipeline			

D. East (Halstead)

Current PAN: 227

Current Capacity: 1,604

Reception Place Forecast

Year	24/25	25/26	26/27	27/28	28/29	29/30	30/31	31/32	32/33	33/34
+/-	29	25	22	18	17	15	15	15	15	15
Colne Engaine CE Primary, Earls Colne Primary, Gosfield Primary, Holy Trinity CE Primary Halstead, Richard de Clare Academy, St Andrew's CE Primary Halstead, St John the Baptist CE (V/A) Primary Pebmarsh										

Number on Roll (NOR)

Year	NOR
24/25	1,525
25/26	1,549
26/27	1,575
27/28	1,560
28/29	1,549

Project Pipeline

School	Year	Description	Places
No expansion projects currently in pipeline			

E. Southwest (Braintree)

Current PAN: 745

Current Capacity: 5,402

Reception Place Forecast

Year	24/25	25/26	26/27	27/28	28/29	29/30	30/31	31/32	32/33	33/34
+/-	122	123	74	73	60	42	27	12	-2	-14

Beckers Green Primary, Bocking Primary, Gt Bradfords Infant, Gt Bradfords Junior, John Bunyan Primary, John Ray Infant, John Ray Junior, Lyons Hall Primary*, Notley Green Primary, Rayne Primary, St Francis Catholic Primary, St Michael's CE Primary, Stisted CE Primary, White Court Primary, White Notley CE Primary

Number on Roll (NOR)

Year	NOR
24/25	4,873
25/26	4,867
26/27	4,924
27/28	4,943
28/29	4,982

Project Pipeline

School	Year	Description	Places
New Primary School	32/33	2 form entry new primary school (will open with PAN of 30)	30/420

Education sites to accommodate new primary schools have been secured on the Panfield Lane development and on land at Straits Mill through a S106 agreements.

There is additional capacity of 30 places per year within existing accommodation of the schools in this group.

F. Southeast (Feering)

Current PAN: 130

Current Capacity: 895

Reception Place Forecast

Year	24/25	25/26	26/27	27/28	28/29	29/30	30/31	31/32	32/33	33/34
+/-	30	28	11	13	7	1	-4	-10	-13	-17

Feering CE Primary, Kelvedon St Mary's CE Primary, St Peter's CE Primary Coggeshall

Number on Roll (NOR)

Year	NOR
24/25	833
25/26	860
26/27	879
27/28	896
28/29	907

Project Pipeline

School	Year	Description	Places
St Peter's CE Primary	25/26	½ form entry expansion	15/105
Feering CE Primary	31/32	Small expansion	5/35

G. Mid-southeast (Cressing & Silver End)

Current PAN: 90
 Current Capacity: 630

Reception Place Forecast

Year	24/25	25/26	26/27	27/28	28/29	29/30	30/31	31/32	32/33	33/34
+/-	-1	12	-7	-5	-4	-5	-5	-4	-7	-7
Cressing Primary, Silver End Academy										

Number on Roll (NOR)

Year	NOR
24/25	604
25/26	622
26/27	656
27/28	673
28/29	677

Project Pipeline

School	Year	Description	Places
Cressing Primary	25/26	½ form entry expansion	15/105

H. South (Witham)

Current PAN: 454
 Current Capacity: 3,138

Reception Place Forecast

Year	24/25	25/26	26/27	27/28	28/29	29/30	30/31	31/32	32/33	33/34
+/-	35	23	-30	-7	-8	-10	-11	-10	-10	-10
Acorn Academy, Chipping Hill Primary, Elm Hall Primary, Hatfield Peverel Infant, Hatfield Peverel St Andrew's Junior, Holy Family Catholic Primary, Howbridge CE Junior, Howbridge Infant, Powers Hall Academy, Rivenhall CE Primary, Templars Academy, Terling CE Primary										

Number on Roll (NOR)

Year	NOR
24/25	3,070
25/26	3,148
26/27	3,244
27/28	3,272
28/29	3,284

Project Pipeline

School	Year	Description	Places
New Primary School at Lodge Farm	25/26	2 form entry new primary school (will open with PAN of 30)	30/420

An education site to accommodate a new primary school has been secured on the Lodge Farm development through a S106 agreement. The DfE have approved a Free School “in principle” to open in September 2025 or 2026.

Secondary School Planning Groups

A. Northeast (Halstead)

Current PAN: 506
Current Capacity: 2,968

Year 7 Place Forecast

Year	24/25	25/26	26/27	27/28	28/29	29/30	30/31	31/32	32/33	33/34
+/-	-10	65	44	-6	5	23	21	53	71	47
Hedingham School, Honeywood, Ramsey										

Number on Roll (NOR)

Year	NOR
24/25	2,787
25/26	2,768
26/27	2,718
27/28	2,697
28/29	2,659

Project Pipeline

School	Year	Description	Places
No expansion projects currently in pipeline			

There is additional capacity of 50 places per year within existing accommodation of the schools in this group.

B. West (Braintree)

Current PAN: 670
Current Capacity: 3,692

Year 7 Place Forecast

Year	24/25	25/26	26/27	27/28	28/29	29/30	30/31	31/32	32/33	33/34
+/-	61	37	35	-5	-8	-27	13	13	1	-33
Alec Hunter, Notley High School, Tabor										

Number on Roll (NOR)

Year	NOR
24/25	3,444
25/26	3,517
26/27	3,530
27/28	3,635
28/29	3,692

Project Pipeline

School	Year	Description	Places
Alec Hunter Academy	27/28	Increasing PAN within existing accommodation	15/0

C. South (Witham)

Current PAN: 420

Current Capacity: 2,500

Year 7 Place Forecast

Year	24/25	25/26	26/27	27/28	28/29	29/30	30/31	31/32	32/33	33/34
+/-	34	12	9	-15	-15	-54	-13	-13	-10	-57
Maltings Academy, New Rickstones Academy										

Number on Roll (NOR)

Year	NOR
24/25	2,185
25/26	2,256
26/27	2,301
27/28	2,320
28/29	2,292

Project Pipeline

School	Year	Description	Places
Maltings Academy	27/28	2 form entry expansion	60/TBC Existing capacity at the school will be used together with new accommodation

3.1.2 Chelmsford

Primary School Planning Groups

A. North (Walthams)

Current PAN: 153

Current Capacity: 1,145

Reception Place Forecast

Year	24/25	25/26	26/27	27/28	28/29	29/30	30/31	31/32	32/33	33/34
+/-	10	12	-12	-26	-45	-65	-84	-103	-122	-128
Broomfield Primary, Ford End CE Primary, Gt Leighs Primary, Gt Waltham CE Primary, Little Waltham CE Primary										

Number on Roll (NOR)

Year	NOR
24/25	1,076
25/26	1,135
26/27	1,201
27/28	1,299
28/29	1,411

Project Pipeline

School	Year	Description	Places
New Primary School	27/28	2 form entry new primary school	60/420

An education site to accommodate a new primary school is included in Chelmsford's Local Plan as part of a housing allocation in the Great Leighs area. This forecast also includes housing from the initial phase of the Northeast Chelmsford Garden Community, which will deliver new schools to meet longer term demand.

B. City northwest (Melbourne)

Current PAN: 240

Current Capacity: 1,680

Reception Place Forecast

Year	24/25	25/26	26/27	27/28	28/29	29/30	30/31	31/32	32/33	33/34
+/-	55	45	64	44	38	33	29	26	23	19
Kings Road Primary, Lawford Mead Primary, Newlands Spring Primary, Parkwood Academy, St Pius X Primary										

Number on Roll (NOR)

Year	NOR
24/25	1,575
25/26	1,551
26/27	1,504
27/28	1,489
28/29	1,461

Project Pipeline

School	Year	Description	Places
No expansion projects currently in pipeline			

Chelmsford's Local Plan allocates land for education use as part of the 'West of Chelmsford' housing development. A new school is dependent on the rate of delivery of new housing and forecasts will be monitored closely.

C. City northeast (Springfield)

Current PAN: 420

Current Capacity: 3,357

Reception Place Forecast

Year	24/25	25/26	26/27	27/28	28/29	29/30	30/31	31/32	32/33	33/34
+/-	11	-10	-21	-20	-26	-32	-38	-43	-47	-51
Barnes Farm Infant, Barnes Farm Junior, Beaulieu Park School, The Bishops CE & Catholic Primary, Boreham Primary, Chancellor Park Primary, Perryfields Infant, Perryfields Junior, Springfield Primary, Tyrrells Primary										

Number on Roll (NOR)

Year	NOR
24/25	3,281
25/26	3,246
26/27	3,229
27/28	3,238
28/29	3,211

Project Pipeline

School	Year	Description	Places
Beaulieu Park School	24/25	2 form entry expansion	60/420

Barnes Farm Infant School's reduced their PAN for September 2023 from 90 to 60, which has been considered when developing this plan.

D. West (Writtle)

Current PAN: 85

Current Capacity: 595

Reception Place Forecast

Year	24/25	25/26	26/27	27/28	28/29	29/30	30/31	31/32	32/33	33/34
+/-	18	10	31	19	19	19	19	18	18	18
Highwood Primary, Roxwell CE Primary, Writtle Infant, Writtle Junior										

Number on Roll (NOR)

Year	NOR
24/25	525
25/26	517
26/27	494
27/28	479
28/29	464

Project Pipeline

School	Year	Description	Places
No expansion projects currently in pipeline			

E. City Centre

Current PAN: 420

Current Capacity: 3,169

Reception Place Forecast

Year	24/25	25/26	26/27	27/28	28/29	29/30	30/31	31/32	32/33	33/34
+/-	51	7	-2	10	6	2	-1	-3	-5	-7

Cathedral CE Primary, Maltese Road Primary, Meadgate Primary, Moulsham Infant, Moulsham Junior, Oaklands Infant, Our Lady Immaculate Catholic Primary, Trinity Road Primary, Westlands Primary

Number on Roll (NOR)

Year	NOR
24/25	2,971
25/26	2,981
26/27	2,973
27/28	2,942
28/29	2,940

Project Pipeline

School	Year	Description	Places
Trinity Road Primary	24/25	½ form entry expansion	15/105

There is additional capacity of 30 places per year within existing accommodation of the schools in this group.

F. East (Danbury)

Current PAN: 114*

Current Capacity: 818

Reception Place Forecast

Year	24/25	25/26	26/27	27/28	28/29	29/30	30/31	31/32	32/33	33/34
+/-	37	14	35	28	28	27	27	26	24	22

Danbury Park Primary, East Hanningfield CE Primary, Priory Primary, St John's CE Primary

Number on Roll (NOR)

Year	NOR
24/25	733
25/26	712
26/27	683
27/28	649
28/29	628

Project Pipeline

School	Year	Description	Places
No expansion projects currently in pipeline			

* The overall PAN will reduce by 10 places to 104 from 2024/25.

G. City South (Baddow)

Current PAN: 282

Current Capacity: 1,986

Reception Place Forecast

Year	24/25	25/26	26/27	27/28	28/29	29/30	30/31	31/32	32/33	33/34
+/-	62	53	48	48	45	43	42	42	41	41

Baddow Hall Infant, Baddow Hall Junior, Beehive Lane Primary, Galleywood Infant, Larkrise Primary, Margaretting CE Primary, Mildmay Primary, St Michael's CE Junior

Number on Roll (NOR)

Year	NOR
24/25	1,877
25/26	1,846
26/27	1,806
27/28	1,774
28/29	1,744

Project Pipeline

School	Year	Description	Places
No expansion projects currently in pipeline			

H. South (Rettendon)

Current PAN: 65

Current Capacity: 454

Reception Place Forecast

Year	24/25	25/26	26/27	27/28	28/29	29/30	30/31	31/32	32/33	33/34
+/-	22	22	24	20	20	19	19	19	19	19

Rettendon Primary, St Luke's Park Primary, St Peter's CE Primary West Hanningfield

Number on Roll (NOR)

Year	NOR
24/25	349
25/26	353
26/27	373
27/28	374
28/29	361

Project Pipeline

School	Year	Description	Places
No expansion projects currently in pipeline			

I. Southeast (Woodham Ferrers)

Current PAN: 239
 Current Capacity: 1,667

Reception Place Forecast

Year	24/25	25/26	26/27	27/28	28/29	29/30	30/31	31/32	32/33	33/34
+/-	53	56	58	41	37	33	30	27	24	23
Collingwood Primary, Elmwood Primary, St Joseph's Cath Primary, St Mary's CE Primary, Trinity St Mary's CE Primary, Woodville Primary										

Number on Roll (NOR)

Year	NOR
24/25	1,426
25/26	1,415
26/27	1,415
27/28	1,450
28/29	1,447

Project Pipeline

School	Year	Description	Places
No expansion projects currently in pipeline			

Chelmsford's Local Plan allocates land for education use north-west of Hamberts Farm, which could facilitate a new primary school if required.

Secondary School Planning Groups

A. Mid (Chelmsford)

Current PAN: 2,052

Current Capacity: 12,994

Year 7 Place Forecast

Year	24/25	25/26	26/27	27/28	28/29	29/30	30/31	31/32	32/33	33/34
+/-	-8	66	12	7	79	37	211	288	178	192

The Boswells School, Beaulieu Park School, Chelmer Valley High School, Chelmsford County High, Great Baddow High School, Hylands School, King Edward VI, Moulsham High School, The Sandon School, St John Payne Catholic School

Number on Roll (NOR)

Year	NOR
24/25	12,641
25/26	12,796
26/27	12,889
27/28	12,948
28/29	12,891

Project Pipeline

School	Year	Description	Places
No expansion projects currently in pipeline			

Beaulieu Park School was built with additional capacity to enable it to increase their PAN by 60 places per year (to 240 places) when required, as the Beaulieu housing development grows and local demand increases.

Land for education use is allocated in Chelmsford's Local Plan which could accommodate a new school on the Northeast Chelmsford Garden Community.

B. Woodham & Burnham

Current PAN: 435

Current Capacity: 2,775

Year 7 Place Forecast

Year	24/25	25/26	26/27	27/28	28/29	29/30	30/31	31/32	32/33	33/34
+/-	-5	-15	-9	-10	-23	-31	19	36	7	18

Ormiston Rivers Academy, William De Ferrers School

Number on Roll (NOR)

Year	NOR
24/25	2,564
25/26	2,623
26/27	2,633
27/28	2,675
28/29	2,642

Project Pipeline

School	Year	Description	Places
William De Ferrers	25/26	Increasing PAN within existing accommodation	30/0

3.1.3 Maldon

Primary School Planning Groups

A. Northwest (Maldon)

Current PAN: 302
Current Capacity: 2,339

Reception Place Forecast

Year	24/25	25/26	26/27	27/28	28/29	29/30	30/31	31/32	32/33	33/34
+/-	9	22	10	4	1	-5	-11	-17	-21	-24

All Saints' CE Primary, Gt Totham Primary, Heybridge Primary, Maldon Primary, St Francis Catholic Primary, Wentworth Primary, Woodham Walter CE Primary

Number on Roll (NOR)

Year	NOR
24/25	2,155
25/26	2,170
26/27	2,195
27/28	2,187
28/29	2,183

Project Pipeline

School	Year	Description	Places
New Primary School – Limebrook Way	24/25	2 form entry new primary school (will open with PAN of 30)	60/420

Land for education use is allocated in Maldon's Local Plan which could accommodate a new school on the Heybridge Garden Suburb.

B. Northeast (Tollesbury & Tolleshunt)

Current PAN: 45
Current Capacity: 449

Reception Place Forecast

Year	24/25	25/26	26/27	27/28	28/29	29/30	30/31	31/32	32/33	33/34
+/-	12	16	11	13	13	13	13	13	13	13

Tollesbury School, Tolleshunt D'Arcy St Nicholas Primary

Number on Roll (NOR)

Year	NOR
24/25	285
25/26	271
26/27	265
27/28	259
28/29	251

Project Pipeline

School	Year	Description	Places
No expansion projects currently in pipeline			

There is additional capacity of 15 places per year within existing accommodation of the schools in this group.

C. Southwest (Norton)

Current PAN: 106

Current Capacity: 842

Reception Place Forecast

Year	24/25	25/26	26/27	27/28	28/29	29/30	30/31	31/32	32/33	33/34
+/-	16	12	-2	9	9	9	8	8	7	7
Cold Norton Primary, Latchingdon CE Primary, Maylandsea Primary, Purleigh Primary										

Number on Roll (NOR)

Year	NOR
24/25	729
25/26	717
26/27	709
27/28	700
28/29	694

Project Pipeline

School	Year	Description	Places
No expansion projects currently in pipeline			

Demand for places within this group will be closely monitored to ensure sufficient capacity in the area.

D. East (Bradwell & Tillingham)

Current PAN: 51

Current Capacity: 336

Reception Place Forecast

Year	24/25	25/26	26/27	27/28	28/29	29/30	30/31	31/32	32/33	33/34
+/-	27	26	26	26	26	26	26	26	26	26
St Cedd's CE Primary, St Nicholas Primary										

Number on Roll (NOR)

Year	NOR
24/25	235
25/26	223
26/27	213
27/28	203
28/29	189

Project Pipeline

School	Year	Description	Places
No expansion projects currently in pipeline			

E. Southeast (Burnham & Southminster)

Current PAN: 135

Current Capacity: 975

Reception Place Forecast

Year	24/25	25/26	26/27	27/28	28/29	29/30	30/31	31/32	32/33	33/34
+/-	11	-14	-13	-6	-5	-6	-7	-7	-7	-8
Burnham-on-Crouch Primary, Southminster CE Primary, St Mary's CE Primary										

Number on Roll (NOR)

Year	NOR
24/25	961
25/26	989
26/27	1,003
27/28	1,001
28/29	1,001

Project Pipeline

School	Year	Description	Places
Burnham-on-Crouch Primary	25/26	1 form entry expansion	210

Secondary School Planning Groups

A. West (Plume)

Current PAN: 295

Current Capacity: 1,841

Year 7 Place Forecast

Year	24/25	25/26	26/27	27/28	28/29	29/30	30/31	31/32	32/33	33/34
+/-	-14	-18	16	-28	-20	-13	2	-4	8	-8
The Plume School										

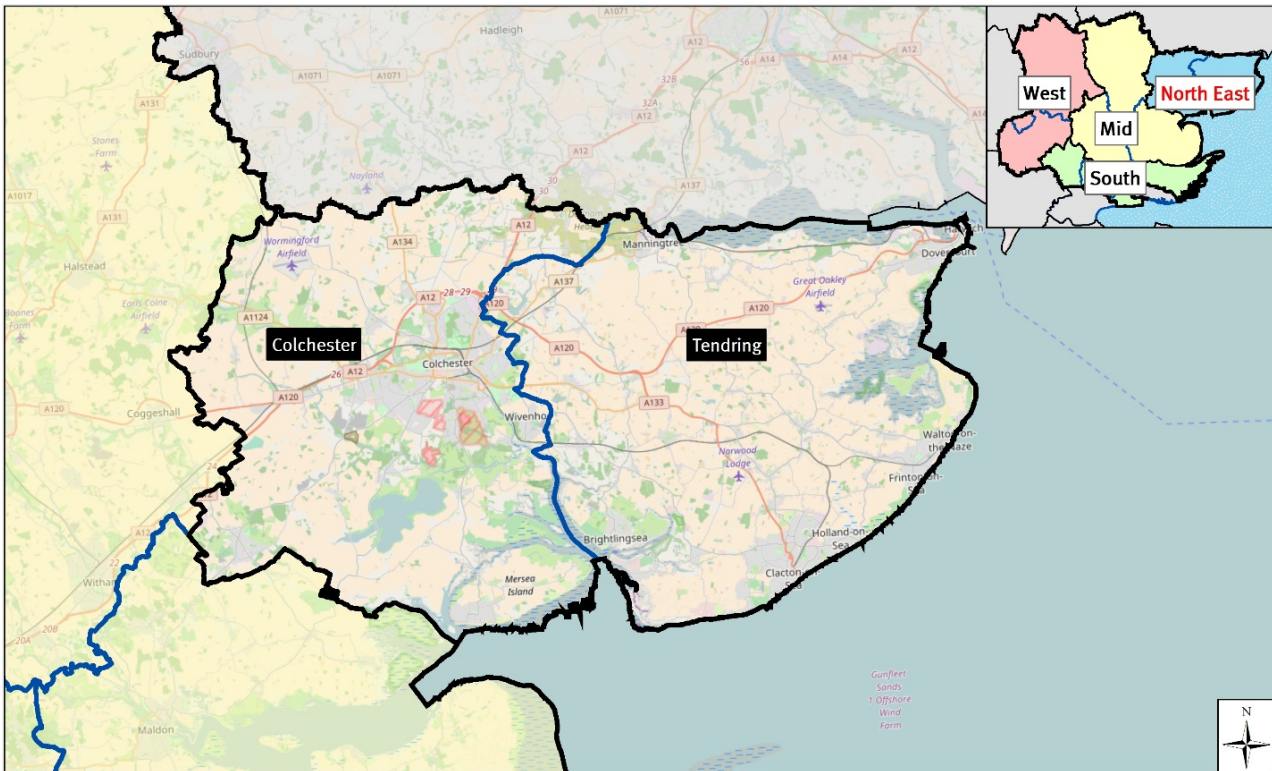
Number on Roll (NOR)

Year	NOR
24/25	1,776
25/26	1,797
26/27	1,776
27/28	1,795
28/29	1,807

Project Pipeline

School	Year	Description	Places
The Plume School	25/26	2 form entry expansion	60/300

3.2 North East Essex



For the purposes of school organisation and place planning North East Essex is Colchester City and Tendring District. Both authorities have adopted Local Development Plans which include a large new Garden Community on the Colchester / Tendring border.

3.2.1 Colchester

Primary School Planning Groups

A. North (Langham)

Current PAN: 76

Current Capacity: 531

Reception Place Forecast

Year	24/25	25/26	26/27	27/28	28/29	29/30	30/31	31/32	32/33	33/34
+/-	15	15	26	17	16	16	15	15	15	15
Boxted St Peter's CE Primary, Dedham CE Primary, Langham Primary										

Number on Roll (NOR)

Year	NOR
24/25	484
25/26	480
26/27	456
27/28	447
28/29	435

Project Pipeline

School	Year	Description	Places
No expansion projects currently in pipeline			

B. Northwest (Tey)

Current PAN: 94

Current Capacity: 661

Reception Place Forecast

Year	24/25	25/26	26/27	27/28	28/29	29/30	30/31	31/32	32/33	33/34
+/-	17	31	21	22	21	20	20	20	19	19
Chappel CE Primary, Fordham All Saints CE Primary, Great Tey CE Primary, Holy Trinity CE Primary, St Andrew's CE Primary (Marks Tey)										

Number on Roll (NOR)

Year	NOR
24/25	572
25/26	559
26/27	539
27/28	541
28/29	545

Project Pipeline

School	Year	Description	Places
No expansion projects currently in pipeline			

C. City north (Highwoods)

Current PAN: 585

Current Capacity: 4,081

Reception Place Forecast

Year	24/25	25/26	26/27	27/28	28/29	29/30	30/31	31/32	32/33	33/34
+/-	84	75	38	49	33	25	18	12	10	8
Bishop William Ward CE Primary, Braiswick Primary, Brinkley Grove Primary, Camulos Academy, Friars Grove Primary, Heathlands CE Primary, Highwoods Community Primary, Myland Community Primary, North Primary and Nursery, Queen Boudica Primary, St John's CE Primary										

Number on Roll (NOR)

Year	NOR
24/25	4,010
25/26	3,968
26/27	3,953
27/28	3,944
28/29	3,936

Project Pipeline

School	Year	Description	Places
Trinity School	26/27	2 form entry primary provision	60/420

Trinity is an all-through free school which opened to admit Year 7 students in 2021. It will admit primary age children into Reception in line with local demand, presently anticipated to be in 2026/27. This is still to be confirmed.

D. City east (Greenstead)

Current PAN: 210

Current Capacity: 1,470

Reception Place Forecast

Year	24/25	25/26	26/27	27/28	28/29	29/30	30/31	31/32	32/33	33/34
+/-	55	58	55	51	46	41	36	32	28	24
Hazelmere Infant and Nursery, Hazelmere Junior, Parsons Heath CE Primary, Roach Vale Primary, Unity Primary Academy, Willow Brook Primary and Nursery										

Number on Roll (NOR)

Year	NOR
24/25	1,278
25/26	1,234
26/27	1,205
27/28	1,191
28/29	1,191

Project Pipeline

School	Year	Description	Places
No expansion projects currently in pipeline			

E. City southwest (Stanway)

Current PAN: 500
 Current Capacity: 3,764

Reception Place Forecast

Year	24/25	25/26	26/27	27/28	28/29	29/30	30/31	31/32	32/33	33/34
+/-	90	111	118	88	75	65	58	52	49	47
Birch CE Primary, Copford CE Primary, Gosbecks Primary, Hamilton Primary, Home Farm Primary, Lakelands Primary, Lexden Primary, Prettygate Infant, Prettygate Junior, St Teresa's Catholic Primary, Stanway Fiveways Primary, Stanway Primary										

Number on Roll (NOR)

Year	NOR
24/25	3,335
25/26	3,275
26/27	3,204
27/28	3,151
28/29	3,144

Project Pipeline

School	Year	Description	Places
No expansion projects currently in pipeline			

Although forecasts indicate there will be a significant surplus of places in the Reception cohort for the next three years we expect these cohorts to increase in size as they move through primary school, due to additional housing being built in the area. This pattern of inward migration has been seen in the area over previous years.

There is additional capacity of 45 places per year within existing accommodation of the schools in this group.

F. City southeast (Berechurch)

Current PAN: 630
 Current Capacity: 4,742

Reception Place Forecast

Year	24/25	25/26	26/27	27/28	28/29	29/30	30/31	31/32	32/33	33/34
+/-	80	122	114	91	79	69	59	49	42	35
Cherry Tree Academy, Icen Academy, Kendall CE Primary, King's Ford Infant and Nursery, Layer-De-La-Haye CE Primary, Monkwick Infant and Nursery, Monkwick Junior, Montgomery Infant and Nursery, Montgomery Junior, Old Heath Primary, St George's School, St James' CE Primary, St John's Green Primary, St Michael's Primary and Nursery, St Thomas More's Catholic Primary										

Number on Roll (NOR)

Year	NOR
24/25	4,137
25/26	4,038
26/27	3,965
27/28	3,932
28/29	3,916

Project Pipeline

School	Year	Description	Places
No expansion projects currently in pipeline			

There is additional capacity of 60 places per year within existing accommodation of the schools in this group.

G. East (Wivenhoe)

Current PAN: 90

Current Capacity: 653

Reception Place Forecast

Year	24/25	25/26	26/27	27/28	28/29	29/30	30/31	31/32	32/33	33/34
+/-	15	24	40	23	19	17	16	15	15	15
Broomgrove Infant, Broomgrove Junior, Millfields Primary										

Number on Roll (NOR)

Year	NOR
24/25	584
25/26	558
26/27	518
27/28	523
28/29	515

Project Pipeline

School	Year	Description	Places
No expansion projects currently in pipeline			

H. Southwest (Messing & Tiptree)

Current PAN: 117

Current Capacity: 954

Reception Place Forecast

Year	24/25	25/26	26/27	27/28	28/29	29/30	30/31	31/32	32/33	33/34
+/-	3	21	-22	-2	-3	-3	-4	-5	-5	-5
Baynards Primary, Messing Primary, Milldene Primary, St Luke's CE Primary, Tiptree Heath Primary										

Number on Roll (NOR)

Year	NOR
24/25	872
25/26	875
26/27	899
27/28	886
28/29	885

Project Pipeline

School	Year	Description	Places
No expansion projects currently in pipeline			

The size of pre-school cohorts and pupil numbers will be monitored carefully. It may be necessary to admit a bulge class at one of the schools in the group in 2026/27.

There is additional capacity of 15 places per year within existing accommodation of the schools in this group.

I. Southeast (Fingringhoe)

Current PAN: 67
 Current Capacity: 481

Reception Place Forecast

Year	24/25	25/26	26/27	27/28	28/29	29/30	30/31	31/32	32/33	33/34
+/-	13	5	0	5	3	2	1	1	1	1
Fingringhoe CE Primary, Langenhoe Community Primary, St Lawrence CE Primary										

Number on Roll (NOR)

Year	NOR
24/25	415
25/26	414
26/27	414
27/28	433
28/29	435

Project Pipeline

School	Year	Description	Places
No expansion projects currently in pipeline			

J. Mersea

Current PAN: 60
 Current Capacity: 450

Reception Place Forecast

Year	24/25	25/26	26/27	27/28	28/29	29/30	30/31	31/32	32/33	33/34
+/-	10	20	25	16	15	15	15	15	15	15
Mersea Island Primary										

Number on Roll (NOR)

Year	NOR
24/25	371
25/26	368
26/27	348
27/28	350
28/29	333

Project Pipeline

School	Year	Description	Places
No expansion projects currently in pipeline			

Secondary School Planning Groups

A. Mid (Colchester)

Current PAN: 2,298
Current Capacity: 12,750

Year 7 Place Forecast

Year	24/25	25/26	26/27	27/28	28/29	29/30	30/31	31/32	32/33	33/34
+/-	82	23	91	110	108	140	228	266	345	320
Colchester Academy, Colchester County High School for Girls, Colchester Royal Grammar School, Paxman Academy, The Gilbert School, Philip Morant School and College, St Benedict's Catholic College, St Helena School, The Stanway School, Thomas Lord Audley School, The Trinity School										

Number on Roll (NOR)

Year	NOR
24/25	12,314
25/26	12,542
26/27	12,551
27/28	12,563
28/29	12,431

Project Pipeline

School	Year	Description	Places
No expansion projects currently in pipeline			

B. South (Thurstable)

Current PAN: 210
Current Capacity: 1,275

Year 7 Place Forecast

Year	24/25	25/26	26/27	27/28	28/29	29/30	30/31	31/32	32/33	33/34
+/-	-15	10	-5	16	3	-16	14	28	36	-6
Thurstable School										

Number on Roll (NOR)

Year	NOR
24/25	1,215
25/26	1,208
26/27	1,203
27/28	1,183
28/29	1,201

Project Pipeline

School	Year	Description	Places
No expansion projects currently in pipeline			

Forecast deficits are expected to be managed within the school's existing accommodation.

3.2.2 Tending

Primary School Planning Groups

A. Northwest (Manningtree)

Current PAN: 140

Current Capacity: 945

Reception Place Forecast

Year	24/25	25/26	26/27	27/28	28/29	29/30	30/31	31/32	32/33	33/34
+/-	19	7	19	8	5	3	1	-1	-3	-5
Ardleigh St Mary's CE Primary, Highfields Primary, Lawford CE Primary, Mistley Norman CE Primary										

Number on Roll (NOR)

Year	NOR
24/25	812
25/26	874
26/27	901
27/28	934
28/29	944

Project Pipeline

School	Year	Description	Places
No expansion projects currently in pipeline			

Pupils on roll at Mistley Norman Primary are presently being educated at Two Village Primary School until a decision is made about replacing RAAC in the Mistley Norman building.

B. North (Oakley)

Current PAN: 54

Current Capacity: 341

Reception Place Forecast

Year	24/25	25/26	26/27	27/28	28/29	29/30	30/31	31/32	32/33	33/34
+/-	10	15	22	15	15	15	15	15	15	15
All Saints CE Primary, Bradfield Primary, Wix & Wrabness Primary										

Number on Roll (NOR)

Year	NOR
24/25	336
25/26	327
26/27	307
27/28	298
28/29	285

Project Pipeline

School	Year	Description	Places
No expansion projects currently in pipeline			

C. Northeast (Dovercourt & Harwich)

Current PAN: 277
 Current Capacity: 1,951

Reception Place Forecast

Year	24/25	25/26	26/27	27/28	28/29	29/30	30/31	31/32	32/33	33/34
+/-	31	66	65	47	44	40	36	35	35	34
All Saints' CE Primary Dovercourt, Chase Lane Primary and Nursery, Harwich Primary and Nursery, Mayflower Primary, Spring Meadow Primary, St Joseph's Cath Primary Harwich, Two Village CE Primary										

Number on Roll (NOR)

Year	NOR
24/25	1,745
25/26	1,710
26/27	1,667
27/28	1,641
28/29	1,645

Project Pipeline

School	Year	Description	Places
No expansion projects currently in pipeline			

D. West (Frating)

Current PAN: 197
 Current Capacity: 1,436

Reception Place Forecast

Year	24/25	25/26	26/27	27/28	28/29	29/30	30/31	31/32	32/33	33/34
+/-	-2	12	6	-4	-9	-16	-21	-26	-31	-36
Alresford Primary, Brightlingsea Primary and Nursery, Elmstead Primary, Gt Bentley Primary, St George's CE Primary										

Number on Roll (NOR)

Year	NOR
24/25	1,437
25/26	1,420
26/27	1,411
27/28	1,446
28/29	1,452

Project Pipeline

School	Year	Description	Places
Great Bentley Primary	24/25	1 form entry expansion	30/210

E. Mid (Thorpe)

Current PAN: 90

Current Capacity: 626

Reception Place Forecast

Year	24/25	25/26	26/27	27/28	28/29	29/30	30/31	31/32	32/33	33/34
+/-	13	16	12	9	7	6	4	2	1	1
Rolph CE Primary, St Andrew's CE Primary, Tendring Primary										

Number on Roll (NOR)

Year	NOR
24/25	597
25/26	583
26/27	582
27/28	590
28/29	585

Project Pipeline

School	Year	Description	Places
No expansion projects currently in pipeline			

F. East (Frinton & Walton)

Current PAN: 150

Current Capacity: 1,090

Reception Place Forecast

Year	24/25	25/26	26/27	27/28	28/29	29/30	30/31	31/32	32/33	33/34
+/-	25	17	27	17	16	15	15	14	14	13
Frinton-On-Sea Primary, Hamford Primary Academy, Kirby Primary Academy, Walton-on-the-Naze Primary										

Number on Roll (NOR)

Year	NOR
24/25	1,021
25/26	1,018
26/27	1,004
27/28	1,002
28/29	987

Project Pipeline

School	Year	Description	Places
No expansion projects currently in pipeline			

G. South (Clacton)

Current PAN: 668

Current Capacity: 4,836

Reception Place Forecast

Year	24/25	25/26	26/27	27/28	28/29	29/30	30/31	31/32	32/33	33/34
+/-	123	125	97	100	93	83	75	66	58	48

Alton Park Junior, Burrsville Infant Academy, Cann Hall Primary, Engaines Primary and Nursery, Gt Clacton CE Junior, Holland Haven Primary, Holland Park Primary, Oakwood Infant and Nursery, Ravens Academy, Sir Martin Frobisher Academy, St Clare's Catholic Primary, St Osyth CE Primary, White Hall Academy

Number on Roll (NOR)

Year	NOR
24/25	4,347
25/26	4,263
26/27	4,233
27/28	4,218
28/29	4,193

Project Pipeline

School	Year	Description	Places
No expansion projects currently in pipeline			

There is a significant amount of new housing planned for Clacton. Sites for education use are allocated in Tendering's Local Plan.

Secondary School Planning Groups

A. Northwest (Manningtree)

Current PAN: 190

Current Capacity: 1,020

Year 7 Place Forecast

Year	24/25	25/26	26/27	27/28	28/29	29/30	30/31	31/32	32/33	33/34
+/-	15	-2	-1	12	-4	4	22	4	0	13
Manningtree High School										

Number on Roll (NOR)

Year	NOR
24/25	950
25/26	958
26/27	974
27/28	957
28/29	953

Project Pipeline

School	Year	Description	Places
No expansion projects currently in pipeline			

There is additional capacity of 14 places per year within existing accommodation at the school.

B. Northeast (Harwich)

Current PAN: 224

Current Capacity: 1,433

Year 7 Place Forecast

Year	24/25	25/26	26/27	27/28	28/29	29/30	30/31	31/32	32/33	33/34
+/-	-17	-9	-12	-19	0	7	13	-8	26	27
Harwich and Dovercourt High School										

Number on Roll (NOR)

Year	NOR
24/25	1,216
25/26	1,233
26/27	1,263
27/28	1,285
28/29	1,283

Project Pipeline

School	Year	Description	Places
No expansion projects currently in pipeline			

The school reduced its PAN by 36 to match lower local demand for places. Should there be a need to admit additional local children the school would be able to do so within its existing accommodation.

C. Southwest (Colne)

Current PAN: 280

Current Capacity: 1,788

Year 7 Place Forecast

Year	24/25	25/26	26/27	27/28	28/29	29/30	30/31	31/32	32/33	33/34
+/-	19	24	57	65	25	68	76	56	90	88
The Colne Community School and College										

Number on Roll (NOR)

Year	NOR
24/25	1,321
25/26	1,330
26/27	1,317
27/28	1,261
28/29	1,227

Project Pipeline

School	Year	Description	Places
No expansion projects currently in pipeline			

D. Southeast (Clacton)

Current PAN: 936

Current Capacity: 5,710

Year 7 Place Forecast

Year	24/25	25/26	26/27	27/28	28/29	29/30	30/31	31/32	32/33	33/34
+/-	86	33	102	107	115	87	163	174	166	167
Clacton County High, Clacton Coastal Academy, Tendring Technology College										

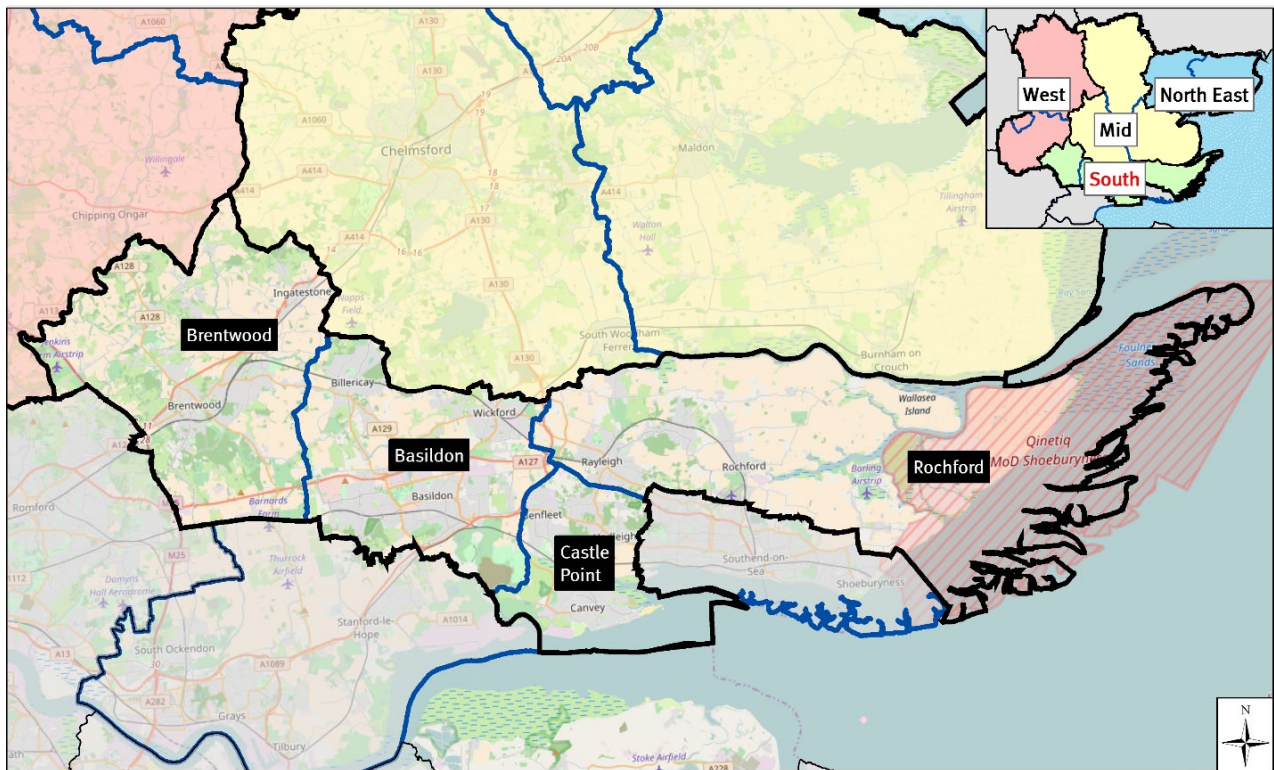
Number on Roll (NOR)

Year	NOR
24/25	5,183
25/26	5,259
26/27	5,212
27/28	5,158
28/29	5,028

Project Pipeline

School	Year	Description	Places
No expansion projects currently in pipeline			

3.3 South Essex



For the purposes of school organisation and place planning South Essex is Basildon, Brentwood, Castle Point and Rochford districts and boroughs. Only Brentwood has an adopted Local Development Plan, and it has started a review.

The demand for school places in this quadrant is influenced by cross-border pupil movement as it borders Greater London, Southend-on-Sea, and Thurrock authorities.

3.3.1 Basildon

Primary School Planning Groups

A. Northwest (Billericay)

Current PAN: 510

Current Capacity: 3,639

Reception Place Forecast

Year	24/25	25/26	26/27	27/28	28/29	29/30	30/31	31/32	32/33	33/34
+/-	75	62	119	81	79	76	75	75	75	74
Brightside Primary, Buttsbury Infant, Buttsbury Junior, Downham CE Primary, Quilters Infant, Quilters Junior, South Green Infant, South Green Junior, St Peter's Cath Primary, Stock CE Primary, Sunnymede Primary										

Number on Roll (NOR)

Year	NOR
24/25	3,461
25/26	3,431
26/27	3,322
27/28	3,227
28/29	3,150

Project Pipeline

School	Year	Description	Places
No expansion projects currently in pipeline			

B. Northeast (Wickford)

Current PAN: 435

Current Capacity: 3,124

Reception Place Forecast

Year	24/25	25/26	26/27	27/28	28/29	29/30	30/31	31/32	32/33	33/34
+/-	54	58	48	53	49	46	43	38	36	35
Abacus Primary, Grange Primary, Hilltop Infant, Hilltop Junior, North Crescent Primary, Oakfield Primary, Runwell Primary, The Wickford CE Infant, Wickford Primary										

Number on Roll (NOR)

Year	NOR
24/25	2,824
25/26	2,792
26/27	2,761
27/28	2,715
28/29	2,707

Project Pipeline

School	Year	Description	Places
No expansion projects currently in pipeline			

C. Town west (Laindon)

Current PAN: 720
 Current Capacity: 5,070

Reception Place Forecast

Year	24/25	25/26	26/27	27/28	28/29	29/30	30/31	31/32	32/33	33/34
+/-	19	12	59	24	21	18	17	16	15	13
Gt Berry Primary, Janet Duke Primary, Laindon Park Primary, Lee Chapel Primary, Lincewood Primary, Merrylands Primary, Millhouse Primary, Noak Bridge Primary, Phoenix Primary, St Anne Line Catholic Infant, St Anne Line Catholic Junior										

Number on Roll (NOR)

Year	NOR
24/25	4,996
25/26	5,030
26/27	5,008
27/28	4,962
28/29	4,936

Project Pipeline

School	Year	Description	Places
New Primary School, Dry Street	24/25	2 form entry new primary school at Dry Street (will open with PAN of 30)	30/420
Expansion of New Primary	As required	1 form entry expansion	30/0

D. Town Centre

Current PAN: 735
 Current Capacity: 5,135

Reception Place Forecast

Year	24/25	25/26	26/27	27/28	28/29	29/30	30/31	31/32	32/33	33/34
+/-	85	135	137	105	94	87	81	75	69	63
Bardfield Academy, Cherry Tree Primary, Crays Hill Primary, Fairhouse Primary, Ghyllgrove Primary, Greensted Primary, Kingswood Primary, Maple Grove Primary, Ryedene Primary, St Teresa's Catholic Primary, Vange Primary, Whitmore Primary, Willows Primary										

Number on Roll (NOR)

Year	NOR
24/25	4,933
25/26	4,850
26/27	4,761
27/28	4,726
28/29	4,693

Project Pipeline

School	Year	Description	Places
No expansion projects currently in pipeline			

A s106 agreement providing land for education use at Gardiners Lane has been signed and could be used for a primary school if required.

E. Town east (Bowers Gifford)

Current PAN: 285

Current Capacity: 1,995

Reception Place Forecast

Year	24/25	25/26	26/27	27/28	28/29	29/30	30/31	31/32	32/33	33/34
+/-	49	53	67	56	56	55	55	55	55	54
Briscoe Primary, Eversley Primary, Felmore Primary, Northlands Primary, St Margaret's CE, Bowers Gifford										

Number on Roll (NOR)

Year	NOR
24/25	1,888
25/26	1,841
26/27	1,774
27/28	1,723
28/29	1,668

Project Pipeline

School	Year	Description	Places
No expansion projects currently in pipeline			

Secondary School Planning Groups

A. Northwest (Billericay)

Current PAN: 550
Current Capacity: 3,293

Year 7 Place Forecast

Year	24/25	25/26	26/27	27/28	28/29	29/30	30/31	31/32	32/33	33/34
+/-	-21	30	23	-12	-18	46	23	69	64	122
The Billericay, Mayflower High										

Number on Roll (NOR)

Year	NOR
24/25	3,449
25/26	3,431
26/27	3,414
27/28	3,436
28/29	3,458

Project Pipeline

School	Year	Description	Places
No expansion projects currently in pipeline			

Many Basildon pupils attend secondary school in Billericay. As the area fills due to local growth over time, it is expected that pupils living in Basildon will attend their local schools.

B. Northeast (Wickford)

Current PAN: 464
Current Capacity: 2,706

Year 7 Place Forecast

Year	24/25	25/26	26/27	27/28	28/29	29/30	30/31	31/32	32/33	33/34
+/-	-37	-41	-43	-35	-42	-11	-33	-1	-3	-8
Beauchamps High, The Bromfords School										

Number on Roll (NOR)

Year	NOR
24/25	2,716
25/26	2,758
26/27	2,810
27/28	2,833
28/29	2,866

Project Pipeline

School	Year	Description	Places
Beauchamps High School	24/25	1 form entry expansion	30/150

Many Basildon pupils attend secondary school in Wickford. As the area fills due to local growth over time, it is expected that pupils living in Basildon will attend their local schools.

C. South (Basildon)

Current PAN: 1,110

Current Capacity: 6,050

Year 7 Place Forecast

Year	24/25	25/26	26/27	27/28	28/29	29/30	30/31	31/32	32/33	33/34
+/-	7	43	15	-39	8	23	-14	44	70	100
Basildon Lower Academy, Basildon Upper Academy, De La Salle, James Hornsby, Woodlands										

Number on Roll (NOR)

Year	NOR
24/25	5,313
25/26	5,451
26/27	5,562
27/28	5,799
28/29	5,875

Project Pipeline

School	Year	Description	Places
tbc	27/28	1 form entry expansion	30/150

Many Basildon pupils attend secondary school in Billericay and Wickford. As those areas fill due to their own local growth over time, there is expected to be an increased need for school places to accommodate pupils living in Basildon.

3.3.2 Brentwood

Primary School Planning Groups

A. Northwest (Doddinghurst)

Current PAN: 115

Current Capacity: 810

Reception Place Forecast

Year	24/25	25/26	26/27	27/28	28/29	29/30	30/31	31/32	32/33	33/34
+/-	29	41	15	25	26	26	26	26	26	27
Blackmore Primary, Doddinghurst Infant, Doddinghurst CE Junior, Kelvedon Hatch Primary										

Number on Roll (NOR)

Year	NOR
24/25	701
25/26	689
26/27	690
27/28	682
28/29	655

Project Pipeline

School	Year	Description	Places
No expansion projects currently in pipeline			

B. Northeast (Ingatestone & Mountnessing)

Current PAN: 75

Current Capacity: 525

Reception Place Forecast

Year	24/25	25/26	26/27	27/28	28/29	29/30	30/31	31/32	32/33	33/34
+/-	13	1	0	3	4	4	4	4	4	5
Ingatestone CE Infant, Ingatestone Junior, Mountnessing CE Primary										

Number on Roll (NOR)

Year	NOR
24/25	483
25/26	502
26/27	517
27/28	506
28/29	507

Project Pipeline

School	Year	Description	Places
No expansion projects currently in pipeline			

C. South (Brentwood)

Current PAN: 708
Current Capacity: 5,122

Reception Place Forecast

Year	24/25	25/26	26/27	27/28	28/29	29/30	30/31	31/32	32/33	33/34
+/-	14	43	-20	-10	-15	-18	-20	-23	-23	-22

Bentley St Paul's CE Primary, Hogarth Primary, Holly Trees Primary, Hutton All Saints' CE Primary, Ingrave Johnstone CE Primary, Larchwood Primary, Long Ridings Primary, Shenfield St Mary's CE Primary, St Helen's Catholic Infant, St Helen's Cath Junior, St Joseph the Worker Catholic Primary, St Peter's CE Primary, St Thomas of Canterbury CE Primary, Warley Primary, Willowbrook Primary

Number on Roll (NOR)

Year	NOR
24/25	4,905
25/26	4,946
26/27	5,018
27/28	5,047
28/29	5,061

Project Pipeline

School	Year	Description	Places
No expansion projects currently in pipeline			

Some local schools have temporarily taken a reduced PAN and will go back up to their original PAN when required.

Additional primary capacity is expected to be required in Shenfield when new housing build rates increase in that area. A potential new school site is included in Brentwood's Local Plan.

D. West Horndon

Current PAN: 30
Current Capacity: 210

Reception Place Forecast

Year	24/25	25/26	26/27	27/28	28/29	29/30	30/31	31/32	32/33	33/34
+/-	6	8	-7	-13	-25	-38	-50	-61	-72	-74

West Horndon Primary

Number on Roll (NOR)

Year	NOR
24/25	175
25/26	180
26/27	236
27/28	307
28/29	379

Project Pipeline

School	Year	Description	Places
New Primary School	27/28	2 form entry new primary school	60/420

The medium to long term increase in demand for primary school places will result from a planned new Garden Community (Dunton Village), for which new schools will be provided.

Secondary School Planning Groups

A. Mid (Brentwood)

Current PAN: 1,291

Current Capacity: 8,171

Year 7 Place Forecast

Year	24/25	25/26	26/27	27/28	28/29	29/30	30/31	31/32	32/33	33/34
+/-	40	36	6	18	62	84	97	66	116	49
Anglo European School, Becket Keys CE School, Brentwood County High School, Brentwood Ursuline Convent High School, Shenfield High School, St Martin's School										

Number on Roll (NOR)

Year	NOR
24/25	8,260
25/26	8,352
26/27	8,408
27/28	8,434
28/29	8,376

Project Pipeline

School	Year	Description	Places
No expansion projects currently in pipeline			

3.3.3 Castle Point

Primary School Planning Groups

A. North (Thundersley)

Current PAN: 540

Current Capacity: 3,753

Reception Place Forecast

Year	24/25	25/26	26/27	27/28	28/29	29/30	30/31	31/32	32/33	33/34
+/-	41	93	59	61	61	60	61	61	62	62
Hadleigh Infant, Hadleigh Junior, Holy Family Catholic Primary, Jotmans Hall Primary, Kents Hill Infant, Kents Hill Junior, Kingston Primary, Montgomerie Primary, Robert Drake Primary, South Benfleet Primary, Thundersley Primary, Westwood Academy, Woodham Ley Primary										

Number on Roll (NOR)

Year	NOR
24/25	3,674
25/26	3,571
26/27	3,537
27/28	3,476
28/29	3,434

Project Pipeline

School	Year	Description	Places
No expansion projects currently in pipeline			

B. South (Canvey)

Current PAN: 420

Current Capacity: 3,167

Reception Place Forecast

Year	24/25	25/26	26/27	27/28	28/29	29/30	30/31	31/32	32/33	33/34
+/-	104	90	79	90	89	88	87	87	87	87
Canvey Island Infant, Canvey Junior, Leigh Beck Infant, Leigh Beck Junior, Lubbins Park Primary, Northwick Park Primary, St Joseph's Catholic Primary, St Katherine's CE Primary, William Read Primary, Winter Gardens Academy										

Number on Roll (NOR)

Year	NOR
24/25	2,622
25/26	2,558
26/27	2,506
27/28	2,448
28/29	2,376

Project Pipeline

School	Year	Description	Places
No expansion projects currently in pipeline			

William Read Primary School is temporarily taking a reduced PAN of 30 and will go back up to 60 when required.

Secondary School Planning Groups

A. North (Benfleet)

Current PAN: 740

Current Capacity: 4,450

Year 7 Place Forecast

Year	24/25	25/26	26/27	27/28	28/29	29/30	30/31	31/32	32/33	33/34
+/-	50	25	49	48	78	66	126	117	178	150
The Appleton School, The Deanes, The King John School										

Number on Roll (NOR)

Year	NOR
24/25	4,219
25/26	4,224
26/27	4,205
27/28	4,157
28/29	4,087

Project Pipeline

School	Year	Description	Places
No expansion projects currently in pipeline			

B. South (Canvey)

Current PAN: 420

Current Capacity: 2,100

Year 7 Place Forecast

Year	24/25	25/26	26/27	27/28	28/29	29/30	30/31	31/32	32/33	33/34
+/-	53	67	73	69	57	123	97	129	116	108
Castle View School, Cornelius Vermuyden										

Number on Roll (NOR)

Year	NOR
24/25	1,863
25/26	1,874
26/27	1,847
27/28	1,810
28/29	1,786

Project Pipeline

School	Year	Description	Places
No expansion projects currently in pipeline			

3.3.4 Rochford

Primary School Planning Groups

A. West (Hullbridge & Rayleigh)

Current PAN: 485

Current Capacity: 3,458

Reception Place Forecast

Year	24/25	25/26	26/27	27/28	28/29	29/30	30/31	31/32	32/33	33/34
+/-	33	69	57	44	41	36	31	25	24	23
Down Hall Primary, Edward Francis Primary, Glebe Primary, Grove Wood Primary, Our Lady of Ransom Catholic Primary, Rayleigh Primary, Riverside Primary, St Nicholas CE Primary, Wyburns Primary										

Number on Roll (NOR)

Year	NOR
24/25	3,275
25/26	3,240
26/27	3,250
27/28	3,222
28/29	3,196

Project Pipeline

School	Year	Description	Places
No expansion projects currently in pipeline			

There is growth in the area, and options for school expansion will be explored.

B. Mid (Ashingdon & Hockley)

Current PAN: 225

Current Capacity: 1,600

Reception Place Forecast

Year	24/25	25/26	26/27	27/28	28/29	29/30	30/31	31/32	32/33	33/34
+/-	6	42	32	26	25	23	21	19	19	18
Ashingdon Primary, Hockley Primary, Plumberow Primary, Westerings Primary										

Number on Roll (NOR)

Year	NOR
24/25	1,564
25/26	1,513
26/27	1,485
27/28	1,460
28/29	1,432

Project Pipeline

School	Year	Description	Places
No expansion projects currently in pipeline			

C. East (Rochford)

Current PAN: 202

Current Capacity: 1,398

Reception Place Forecast

Year	24/25	25/26	26/27	27/28	28/29	29/30	30/31	31/32	32/33	33/34
+/-	20	6	23	8	3	-3	-10	-13	-13	-14

Canewdon Endowed CE Primary, Holt Farm Infant, Holt Farm Junior, Rochford Primary, St Teresa's Catholic Primary, Stambridge Primary, Waterman Primary

Number on Roll (NOR)

Year	NOR
24/25	1,167
25/26	1,219
26/27	1,257
27/28	1,317
28/29	1,338

Project Pipeline

School	Year	Description	Places
tbc	27/28	½ form entry expansion	15/105

D. Southeast (Barling & Wakering)

Current PAN: 90

Current Capacity: 630

Reception Place Forecast

Year	24/25	25/26	26/27	27/28	28/29	29/30	30/31	31/32	32/33	33/34
+/-	21	6	-1	8	8	7	7	7	7	6

Barling Magna Primary, Great Wakering Primary

Number on Roll (NOR)

Year	NOR
24/25	611
25/26	602
26/27	607
27/28	596
28/29	583

Project Pipeline

School	Year	Description	Places
No expansion projects currently in pipeline			

Secondary School Planning Groups

A. West (Rayleigh)

Current PAN: 570
Current Capacity: 3,450

Year 7 Place Forecast

Year	24/25	25/26	26/27	27/28	28/29	29/30	30/31	31/32	32/33	33/34
+/-	49	23	85	73	83	44	93	83	126	120
The Fitzwimarc School, The Sweyne Park School										

Number on Roll (NOR)

Year	NOR
24/25	3,320
25/26	3,325
26/27	3,253
27/28	3,175
28/29	3,083

Project Pipeline

School	Year	Description	Places
No expansion projects currently in pipeline			

B. East (Rochford & Hockley)

Current PAN: 540
Current Capacity: 3,280

Year 7 Place Forecast

Year	24/25	25/26	26/27	27/28	28/29	29/30	30/31	31/32	32/33	33/34
+/-	68	55	51	78	27	73	89	61	69	80
Greensward Academy, The King Edmund School										

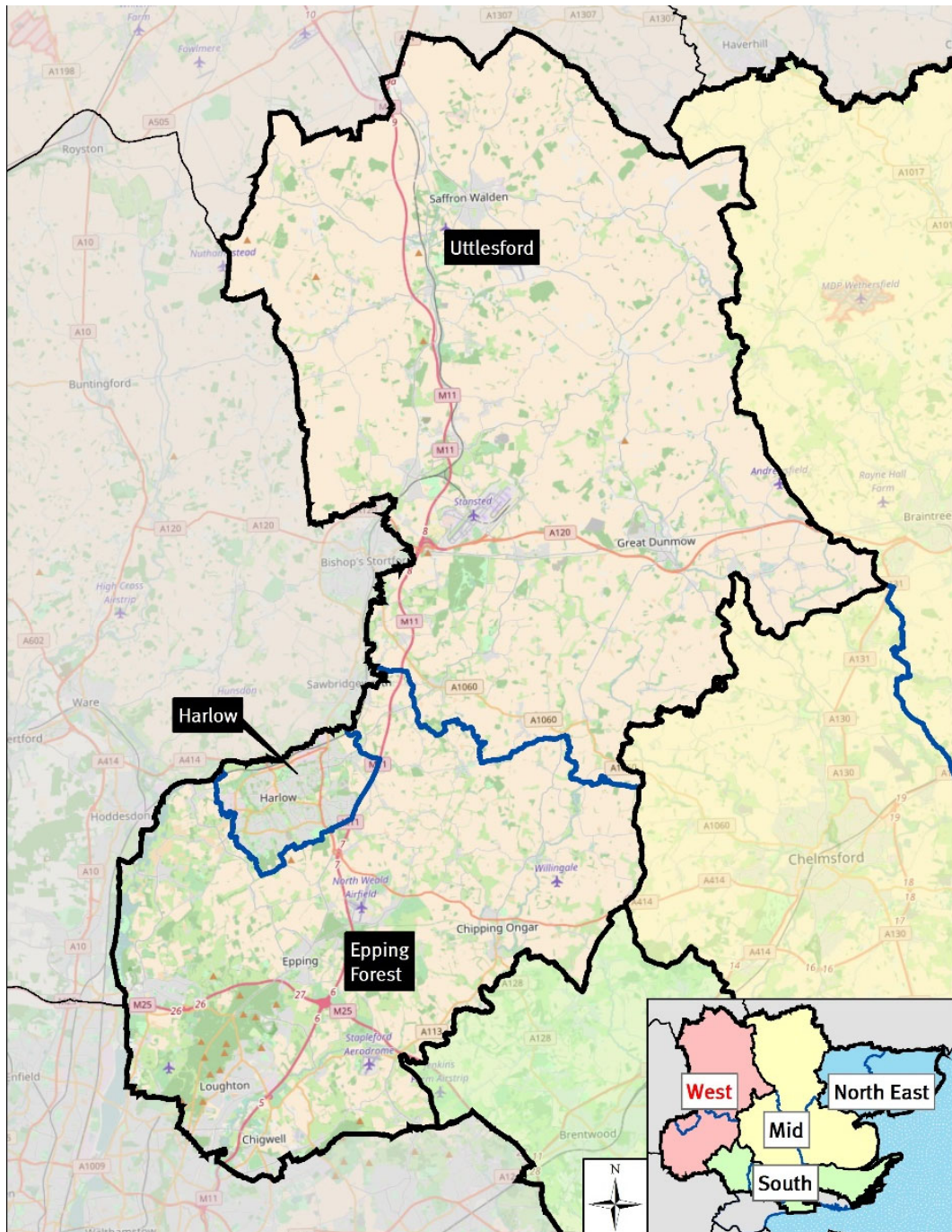
Number on Roll (NOR)

Year	NOR
24/25	3,068
25/26	3,044
26/27	3,026
27/28	2,967
28/29	2,989

Project Pipeline

School	Year	Description	Places
No expansion projects currently in pipeline			

3.4 West Essex



For the purposes of school organisation and place planning West Essex is Uttlesford, Epping Forest and Harlow districts. Demand for school places in this quadrant is influenced by cross-border pupil movement as it borders Greater London, Cambridgeshire, and Hertfordshire authorities.

Harlow and Epping Forest have an adopted Local Development Plan. Uttlesford are consulting on a new draft plan.

3.4.1 Epping Forest

Primary School Planning Groups

A. Nazeing

Current PAN: 45
Current Capacity: 300

Reception Place Forecast

Year	24/25	25/26	26/27	27/28	28/29	29/30	30/31	31/32	32/33	33/34
+/-	7	0	-7	-3	-3	-3	-3	-3	-3	-2
Nazeing Primary										

Number on Roll (NOR)

Year	NOR
24/25	279
25/26	295
26/27	324
27/28	332
28/29	329

Project Pipeline

School	Year	Description	Places
No expansion projects currently in pipeline			

B. North (Epping)

Current PAN: 225
Current Capacity: 1,600

Reception Place Forecast

Year	24/25	25/26	26/27	27/28	28/29	29/30	30/31	31/32	32/33	33/34
+/-	-4	23	6	-9	-15	-23	-31	-37	-40	-40
Coopersale and Theydon Garnon CE Primary, Epping Primary, Epping Upland CE Primary, Ivy Chimneys Primary, St Andrew's CE Primary										

Number on Roll (NOR)

Year	NOR
24/25	1,516
25/26	1,588
26/27	1,640
27/28	1,681
28/29	1,713

Project Pipeline

School	Year	Description	Places
New Primary School	27/28	2 form entry new primary school	60/420

Planned new housing in this area is generating the forecast deficit of school places, and two potential sites for a new primary school are included in Epping Forest's Local Plan. Temporary bulge classes will be put in place as required in the interim.

C. Northeast (Ongar)

Current PAN: 142

Current Capacity: 990

Reception Place Forecast

Year	24/25	25/26	26/27	27/28	28/29	29/30	30/31	31/32	32/33	33/34
+/-	23	29	7	11	8	5	5	6	6	6

Chipping Ongar Primary, Dr Walker's CE Primary, High Ongar Primary, Matching Green CE Primary, Moreton CE Primary, Ongar Primary

Number on Roll (NOR)

Year	NOR
24/25	867
25/26	874
26/27	924
27/28	938
28/29	948

Project Pipeline

School	Year	Description	Places
No expansion projects currently in pipeline			

D. West (Waltham Abbey)

Current PAN: 255

Current Capacity: 1,734

Reception Place Forecast

Year	24/25	25/26	26/27	27/28	28/29	29/30	30/31	31/32	32/33	33/34
+/-	37	12	31	19	16	13	10	8	8	8

High Beech CE Primary, Hillhouse CE Primary, Leverton Primary, Upshire Primary, Waltham Holy Cross Primary

Number on Roll (NOR)

Year	NOR
24/25	1,614
25/26	1,638
26/27	1,640
27/28	1,682
28/29	1,705

Project Pipeline

School	Year	Description	Places
No expansion projects currently in pipeline			

Capacity will increase next year as the current capacity does not reflect the completion of Hillhouse. ½ form entry expansion completed in Sept 2023

E. Southwest (Buckhurst Hill & Loughton)

Current PAN: 585

Current Capacity: 4,303

Reception Place Forecast

Year	24/25	25/26	26/27	27/28	28/29	29/30	30/31	31/32	32/33	33/34
+/-	45	60	94	61	63	63	65	66	68	69
Alderton Infant, Alderton Junior, Buckhurst Hill Primary, Hereward Primary, St John Fisher Catholic Primary, St John's CE Primary, Staples Road Primary, Theydon Bois Primary, Thomas Willingale School, White Bridge Primary										

Number on Roll (NOR)

Year	NOR
24/25	3,672
25/26	3,738
26/27	3,707
27/28	3,735
28/29	3,704

Project Pipeline

School	Year	Description	Places
No expansion projects currently in pipeline			

Schools reduced PAN in this group so could increase again in the future.

F. Southeast (Chigwell)

Current PAN: 170

Current Capacity: 1,129

Reception Place Forecast

Year	24/25	25/26	26/27	27/28	28/29	29/30	30/31	31/32	32/33	33/34
+/-	25	8	28	16	16	17	17	18	18	18
Chigwell Primary, Chigwell Row Infant, Lambourne Primary, Limes Farm Infant, Limes Farm Junior, Stapleford Abbots Primary										

Number on Roll (NOR)

Year	NOR
24/25	1,009
25/26	1,079
26/27	1,109
27/28	1,119
28/29	1,105

Project Pipeline

School	Year	Description	Places
No expansion projects currently in pipeline			

Secondary School Planning Groups

A. West (Loughton)

Current PAN: 1,037

Current Capacity: 6,283

Year 7 Place Forecast

Year	24/25	25/26	26/27	27/28	28/29	29/30	30/31	31/32	32/33	33/34
+/-	-10	74	2	39	-35	44	-41	3	-21	58
Davenant, Debden Park High School, King Harold Business & Enterprise, Roding Valley High School, West Hatch High School										

Number on Roll (NOR)

Year	NOR
24/25	6,259
25/26	6,267
26/27	6,326
27/28	6,315
28/29	6,360

Project Pipeline

School	Year	Description	Places
No expansion projects currently in pipeline due to the cross-border movement within this group.			

A school in the group has reduced their PAN and could increase again in the future.

B. East (Epping & Ongar)

Current PAN: 300

Current Capacity: 1,820

Year 7 Place Forecast

Year	24/25	25/26	26/27	27/28	28/29	29/30	30/31	31/32	32/33	33/34
+/-	20	26	0	-24	-24	-8	-19	-19	7	-12
Epping St John's CE, Ongar Academy										

Number on Roll (NOR)

Year	NOR
24/25	1,687
25/26	1,711
26/27	1,746
27/28	1,785
28/29	1,824

Project Pipeline

School	Year	Description	Places
New Secondary School	30/31	6 form entry new secondary school	180/900

The Harlow Gilston Garden Community includes housing on Epping Forest District Council's border with Harlow. The Local Plans for these districts allocate two potential sites for secondary school provision.

3.4.2 Harlow

Primary School Planning Groups

A. Northwest (Town Centre)

Current PAN: 420

Current Capacity: 2,984

Reception Place Forecast

Year	24/25	25/26	26/27	27/28	28/29	29/30	30/31	31/32	32/33	33/34
+/-	52	83	29	49	48	45	42	38	33	29
Cooks Spinney Primary Academy and Nursery, Downs Primary and Nursery, Freshwaters Primary Academy, Hare Street Primary and Nursery, Little Parndon Primary, Pemberley Academy, St Alban's Catholic Academy, Tany's Dell Primary and Nursery										

Number on Roll (NOR)

Year	NOR
24/25	2,840
25/26	2,782
26/27	2,777
27/28	2,751
28/29	2,711

Project Pipeline

School	Year	Description	Places
No expansion projects currently in pipeline			

B. East (Church Langley)

Current PAN: 300

Current Capacity: 2,400

Reception Place Forecast

Year	24/25	25/26	26/27	27/28	28/29	29/30	30/31	31/32	32/33	33/34
+/-	-15	-21	-80	-53	-66	-74	-83	-93	-102	-109
Church Langley Community Primary, Churchgate CE Primary, Fawbert & Barnard's Primary, Harlowbury Primary, Henry Moore Primary, Newhall Primary Academy, Potter Street Academy										

Number on Roll (NOR)

Year	NOR
24/25	2,279
25/26	2,317
26/27	2,374
27/28	2,440
28/29	2,526

Project Pipeline

School	Year	Description	Places
Harlowbury Primary	25/26	1 form entry expansion	30/210
Newhall Primary	26/27	1 form entry expansion	30/210

These figures represent Church Langley and Henry Moore at their lower number of 60 each. Note that Henry Moore has Published 90 for 2024 so the -15 shown is accommodated.

Demand is driven by new housing in the area. Education land is also allocated in Harlow's Local Plan on the proposed 'Garden Community' development to the east and will enable new primary schools to be built to accommodate long term demand for places.

C. Southwest (Tye Green)

Current PAN: 645

Current Capacity: 4,629

Reception Place Forecast

Year	24/25	25/26	26/27	27/28	28/29	29/30	30/31	31/32	32/33	33/34
+/-	122	111	134	102	90	79	67	55	43	33

Abbotsweld Primary, Holy Cross Catholic Academy, Jerounds Primary Academy, Katherines Primary Academy, Kingsmoor Academy, Latton Green Primary, Longwood Primary Academy, Milwards Primary and Nursery, Pear Tree Mead Academy, Purford Green Primary, Roydon Primary, St James' CE Primary, St Luke's Catholic Academy, Water Lane Primary Academy, William Martin CE Infant and Nursery, William Martin CE Junior

Number on Roll (NOR)

Year	NOR
24/25	4,107
25/26	4,023
26/27	4,007
27/28	4,021
28/29	4,016

Project Pipeline

School	Year	Description	Places
No expansion projects currently in pipeline			

Land for education use, to meet potential long-term demand that may be generated by 'Garden Community' proposals on Harlow's southern border, is included in Epping Forest District Council's Local Plan.

Secondary School Planning Groups

A. Mid (Harlow)

Current PAN: 1,282

Current Capacity: 7,590

Year 7 Place Forecast

Year	24/25	25/26	26/27	27/28	28/29	29/30	30/31	31/32	32/33	33/34
+/-	47	70	106	74	48	62	48	82	85	4

BMAT STEM Academy, Burnt Mill Academy, Mark Hall Academy, Passmores Academy, Sir Frederick Gibberd College, St Mark's West Essex Catholic School, Stewards Academy

Number on Roll (NOR)

Year	NOR
24/25	6,282
25/26	6,399
26/27	6,452
27/28	6,513
28/29	6,599

Project Pipeline

School	Year	Description	Places
No expansion projects currently in pipeline			

The Harlow Gilston Garden Community includes housing on Harlow District Council's border with Epping Forest. The Local Plans for these districts allocate two potential sites for secondary school provision.

The total PAN and capacity of schools noted above considers changes caused by recent buildings related issues at Sir Frederick Gibberd College.

3.4.3 Uttlesford

Primary School Planning Groups

A. Chrishall

Current PAN: 15
Current Capacity: 105

Reception Place Forecast

Year	24/25	25/26	26/27	27/28	28/29	29/30	30/31	31/32	32/33	33/34
+/-	0	11	4	5	5	5	5	5	5	5
Chrishall Holy Trinity & St Nicholas CE Primary										

Number on Roll (NOR)

Year	NOR
24/25	122
25/26	114
26/27	110
27/28	97
28/29	87

Project Pipeline

School	Year	Description	Places
No expansion projects currently in pipeline			

B. North (Saffron Walden)

Current PAN: 255
Current Capacity: 1,805

Reception Place Forecast

Year	24/25	25/26	26/27	27/28	28/29	29/30	30/31	31/32	32/33	33/34
+/-	22	58	45	35	32	29	28	27	27	26
Ashdon Primary, Gt Chesterford CE Primary, Katherine Semar Infant, Katherine Semar Junior, R A Butler Infant, R A Butler Junior, St Mary's CE Primary, St Thomas More Catholic Primary										

Number on Roll (NOR)

Year	NOR
24/25	1,779
25/26	1,739
26/27	1,717
27/28	1,671
28/29	1,648

Project Pipeline

School	Year	Description	Places
No expansion projects currently in pipeline			
Land options have been secure via s106 agreements for a new primary school, should this be required.			

C. Northeast (Thaxted)

Current PAN: 106

Current Capacity: 764

Reception Place Forecast

Year	24/25	25/26	26/27	27/28	28/29	29/30	30/31	31/32	32/33	33/34
+/-	23	24	24	24	23	23	22	22	22	22
Debden CE Primary, Gt Sampford Primary, Radwinter CE Primary, Thaxted Primary, Wimbish Primary										

Number on Roll (NOR)

Year	NOR
24/25	676
25/26	660
26/27	650
27/28	624
28/29	621

Project Pipeline

School	Year	Description	Places
No expansion projects currently in pipeline			

D. Mid-west (Newport)

Current PAN: 75

Current Capacity: 513

Reception Place Forecast

Year	24/25	25/26	26/27	27/28	28/29	29/30	30/31	31/32	32/33	33/34
+/-	12	15	3	10	9	9	9	9	8	8
Clavering Primary, Newport Primary, Rickling CE Primary										

Number on Roll (NOR)

Year	NOR
24/25	485
25/26	472
26/27	472
27/28	452
28/29	453

Project Pipeline

School	Year	Description	Places
No expansion projects currently in pipeline			

E. West (Stansted)

Current PAN: 235

Current Capacity: 1,624

Reception Place Forecast

Year	24/25	25/26	26/27	27/28	28/29	29/30	30/31	31/32	32/33	33/34
+/-	36	48	31	29	26	23	23	22	22	22
Bentfield Primary, Birchanger CE Primary, Elsenham CE Primary, Farnham CE Primary, Henham and Ugley Primary, Magna Carta Primary, Manuden Primary, St Mary's CE Primary										

Number on Roll (NOR)

Year	NOR
24/25	1,504
25/26	1,529
26/27	1,537
27/28	1,507
28/29	1,509

Project Pipeline

School	Year	Description	Places
No expansion projects currently in pipeline			

F. Mid (Takeley)

Current PAN: 90

Current Capacity: 690

Reception Place Forecast

Year	24/25	25/26	26/27	27/28	28/29	29/30	30/31	31/32	32/33	33/34
+/-	15	27	33	19	19	18	18	18	18	18
Roseacres Primary, Takeley Primary										

Number on Roll (NOR)

Year	NOR
24/25	573
25/26	562
26/27	564
27/28	547
28/29	533

Project Pipeline

School	Year	Description	Places
No expansion projects currently in pipeline			

G. Mid-east (Dunmow & Gt Easton)

Current PAN: 170

Current Capacity: 1,100

Reception Place Forecast

Year	24/25	25/26	26/27	27/28	28/29	29/30	30/31	31/32	32/33	33/34
+/-	26	13	-5	-12	-22	-32	-40	-45	-48	-49
Dunmow St Mary's Primary, Gt Dunmow Primary, Gt Easton CE Primary, Helena Romanes										

Number on Roll (NOR)

Year	NOR
24/25	1,179
25/26	1,249
26/27	1,304
27/28	1,332
28/29	1,378

Project Pipeline

School	Year	Description	Places
Helena Romanes School	26/27	1 form entry expansion	30/360
New Primary School	30/31	2 form entry new primary school	60/420

Options on sites for new primary schools, secured through S106 agreements will provide the ability to deliver new primary facilities to meet the increasing local need for school places.

H. East (Felsted)

Current PAN: 105

Current Capacity: 768

Reception Place Forecast

Year	24/25	25/26	26/27	27/28	28/29	29/30	30/31	31/32	32/33	33/34
+/-	25	21	27	21	20	19	19	19	19	19
Felsted Primary, Fritch Green Academy, Stebbing Primary										

Number on Roll (NOR)

Year	NOR
24/25	705
25/26	717
26/27	694
27/28	668
28/29	645

Project Pipeline

School	Year	Description	Places
No expansion projects currently in pipeline			

I. South (Hatfield)

Current PAN: 81
 Current Capacity: 567

Reception Place Forecast

Year	24/25	25/26	26/27	27/28	28/29	29/30	30/31	31/32	32/33	33/34
+/-	25	19	22	20	18	18	18	17	17	17
Hatfield Heath Primary, Little Hallingbury CE Primary, Sheering CE Primary, St Mary's CE Primary										

Number on Roll (NOR)

Year	NOR
24/25	463
25/26	461
26/27	456
27/28	449
28/29	452

Project Pipeline

School	Year	Description	Places
No expansion projects currently in pipeline			

J. Rodings

Current PAN: 30
 Current Capacity: 300

Reception Place Forecast

Year	24/25	25/26	26/27	27/28	28/29	29/30	30/31	31/32	32/33	33/34
+/-	-2	-4	2	-2	-2	-2	-2	-2	-2	-2
Rodings Primary										

Number on Roll (NOR)

Year	NOR
24/25	280
25/26	283
26/27	264
27/28	241
28/29	240

Project Pipeline

School	Year	Description	Places
No expansion projects currently in pipeline			

The school has accommodation to admit more than 30 pupils per year if required to meet local demand.

Secondary School Planning Groups

A. North (Newport & Saffron Walden)

Current PAN: 480

Current Capacity: 3,250

Year 7 Place Forecast

Year	24/25	25/26	26/27	27/28	28/29	29/30	30/31	31/32	32/33	33/34
+/-	-9	13	41	9	67	72	70	87	128	105
Joyce Frankland Academy, Saffron Walden County High										

Number on Roll (NOR)

Year	NOR
24/25	3,328
25/26	3,329
26/27	3,292
27/28	3,254
28/29	3,141

Project Pipeline

School	Year	Description	Places
No expansion projects currently in pipeline			

B. South (Dunmow & Stansted)

Current PAN: 402

Current Capacity: 2,223

Year 7 Place Forecast

Year	24/25	25/26	26/27	27/28	28/29	29/30	30/31	31/32	32/33	33/34
+/-	42	22	-33	-24	-2	-46	-4	5	14	11
Forest Hall, Helena Romanes										

Number on Roll (NOR)

Year	NOR
24/25	1,859
25/26	1,974
26/27	2,086
27/28	2,187
28/29	2,253

Project Pipeline

School	Year	Description	Places
Forest Hall School	26/27	½ form entry expansion	18/90

Demand for school places at Forest Hall School will be monitored closely due to the cross-border movement with pupils attending a new school in Bishops Stortford

4. Past Expansions and New Schools in Essex

The tables below summarise the permanent expansions and new schools that have been delivered at mainstream schools across Essex over the past 7 years. This list does not include numerous other capital investments in the school estate such as maintenance work, temporary accommodation, or accommodation rebuild.

Mid Essex

Braintree

School	Project Type
New Rickstones Academy	Expansion
Alec Hunter Secondary	Expansion
Chipping Hill Primary	Expansion
Cressing Primary	Expansion
De Vere Primary	Expansion
Earls Colne Primary	Expansion
John Bunyan Primary	Expansion
Silver End Primary	Expansion
St Giles Primary	Expansion

Chelmsford

School	Project Type
St Luke's Park Primary	New School
Beaulieu Park School	New School
Boreham Primary	Expansion
Broomfield Primary	Expansion
Little Waltham Primary	Expansion
Maltese Road Primary	New School
Margaretting Primary	Expansion
Moulsham High	Expansion
Moulsham Infant	Expansion
Moulsham Junior	Expansion
Springfield Primary	Expansion

Maldon

School	Project Type
Ormiston Rivers Academy	Expansion

North East Essex

Colchester

School	Project Type
Braiswick Primary	New School
Camulos Academy	New School
Home Farm Primary	Expansion
Lakelands Primary	New School
Monkwick Infant	Expansion
Monkwick Junior	Expansion
Paxman Academy	New School
Philip Morant Secondary	Expansion
St John's Green Primary	Expansion
St Lawrence Primary	Expansion
St Michael's Primary	Expansion
Stanway Fiveways Primary	Expansion
Stanway Primary	Expansion
Stanway Secondary	Expansion
The Gilbert Secondary	Expansion
Trinity School	New School

Tendring

School	Project Type
Alresford Primary	Expansion
Clacton County High School	Expansion
Colne Secondary	Expansion
Hamford Primary	Expansion
Holland Haven Primary	Expansion
Lawford Primary	Expansion
Manningtree Secondary	Expansion
Mayflower Primary	Expansion
Ravens Academy	Expansion
Tendring Primary School	Expansion

South Essex

Basildon

School	Project Type
Abacus Primary	Expansion
Beauchamps High	Expansion
Brightside Primary	Expansion
Ghyllgrove Primary	Expansion
Lee Chapel Primary	Expansion
Merrylands Primary	Expansion
Northlands Primary	Expansion
Phoenix Primary	Expansion
Runwell Primary	Expansion
Ryedene Primary	Expansion
Whitmore Primary	Expansion

Brentwood

School	Project Type
Hogarth Primary	Expansion
Larchwood Primary	Expansion
Mountnessing Primary	Expansion
Warley Primary	Expansion
West Horndon Primary	Expansion

Castle Point

School	Project Type
Northwick Park Primary	Expansion

Rochford

School	Project Type
Barling Magna Primary	Expansion
Riverside Primary	Expansion
Fitzwimarc Secondary	Expansion
Sweyne Park School	Expansion
Westerings Primary	Expansion

West Essex

Epping Forest

School	Project Type
Coopersale & Theydon Garnon Primary	Expansion
Epping Primary	Expansion
Ivy Chimneys	Expansion
Hillhouse Primary	Expansion
Ongar Academy	New School
Roding Valley Secondary	Expansion
St Andrew's Primary	Expansion
West Hatch Secondary	Expansion
White Bridge Primary	Expansion

Harlow

School	Project Type
Freshwaters Primary	Expansion
Kingsmoor Primary	Expansion
Longwood Primary	Expansion
Newhall Primary	New School
Pear Tree Mead Primary	Expansion
Sir Frederick Gibberd College	New School
The Downs Primary	Expansion

Uttlesford

School	Project Type
Clavering Primary	Expansion
Elsenham Primary	Expansion
Flitch Green Primary	Expansion
Forest Hall School	Expansion
Helena Romanes Primary	Expansion
Helena Romanes Secondary	Expansion
Joyce Frankland Secondary	Expansion
Magna Carta Primary	New School
Newport Primary	Expansion
R A Butler Infant	Expansion
R A Butler Junior	Expansion
Radwinter Primary	Expansion
Rodings Primary	Expansion
Roseacres Primary	New School
Stebbing Primary	Expansion
Wimbish Primary	Expansion

This information is issued by:
Essex County Council

Contact us:
school.organisation@essex.gov.uk

School Organisation & Place Planning
Essex County Council
County Hall, Chelmsford
Essex, CM1 1QH

 **Essex_CC**
 **facebook.com/essexcountycouncil**

The information contained in this document can be translated, and/or made available in alternative formats, on request.

Published 31 January 2024